

SACENDU

South African Community Epidemiology Network on Drug Use

Vol 27 (2), 2025

RESEARCH BRIEF

Monitoring Alcohol, Tobacco and Other Drug Use Trends in South Africa (July 1996 – Dec 2023)

Jodilee Erasmus, Nancy Hornsby, Nadine Harker, Kim Johnson, Mompoti Kamogelo Moletsane, Charles Parry, TB HIV Care, Anova Health Institute, University of Pretoria (COSUP), SANCA, NACOSA, Tintswalo Home Based Care, Urban Futures Centre (DUT), Advanced Access & Delivery, & Sediba Hope Medical Centre

Publication date: February 2025

SACENDU Research Brief, Vol 27 (2), 2025

The SACENDU Research Brief is the Alcohol, Tobacco and Other Drug Research Unit of the South African Medical Research Council's bi-annual publication of substance-use related treatment and harm reduction data for the period July-December 2023.

© SACENDU 2025

All rights reserved. Under the terms of this licence, you may copy, redistribute and adapt the work for non-commercial purposes, provided the work is appropriately cited, as indicated below. In any use of this work, there should be no suggestion that SACENDU endorses any specific organisation, products or services. The use of the SACENDU logo is not permitted.

If this work is translated, you should add the following disclaimer along with the suggested citation: "This translation was not created by the South African Community Epidemiology Network on Drug Use (SACENDU). SACENDU is not responsible for the content or accuracy of this translation. The original English edition shall be the binding and authentic edition".

Suggested citation: SACENDU Research Brief: monitoring alcohol, tobacco and other drug use trends in South Africa (July-December 2023) Vol 27 (2). Cape Town, South Africa: Alcohol, Tobacco and Other Drug Research Unit, South African Medical Research Council; 2025.

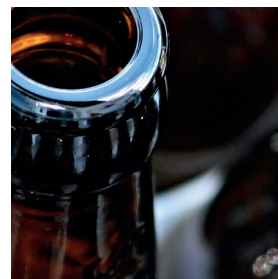
Disclaimer: The information presented in this report are based on the data available at the time of publication.

All reasonable precautions have been taken by SACENDU to verify the information contained in this publication.

CONTENTS

BACKGROUND AND SUMMARY	2
METHODOLOGY	4
<hr/>	
SECTION 1: DATA FROM SPECIALIST SUD TREATMENT CENTRES	6
Site summaries – Primary Substance of Use by Province	6
Site Summaries: Socio-Demographic Profiles	13
Summaries by Substance of Use	17
<hr/>	
SECTION 2: DATA FROM COMMUNITY-BASED HARM REDUCTION SERVICES	27
IMPLICATIONS FOR POLICY AND FUTURE RESEARCH	31
Selected implications for policy/practice	31
Selected issues to monitor	31
Selected topics for further research/investigation	32
Limitations	32
<hr/>	
TABLES AND FIGURES	
Table 1: Description of treatment centre location in South Africa	4
Table 2: Primary substance of use: by site and 6-month period (%)	7
Table 3: Referral sources (Jul-Dec 2023) [Column % add up to 100]	13
Table 4: Mean age of persons in treatment centres by selected primary substance of use (Jan-Jun 2023)	15
Table 5: Primary substance of use for persons ≤18 years (%): Jul-Dec 2023*	16
Table 6: Primary or Secondary Substance of Use* (%): Jul-Dec 2023	18
Table 7: PWID accessing needle and syringe service and behaviour change intervention program (July - December 2023)	29
Table 8: Comparison of proportion of people who use drugs accessing needle and syringe services (July - December 2023) with census data - by District	29
Table 9: People with opioid dependence on opioid substitution therapy, lost to follow-up and exited (July - December 2023) - by District	30
Figure 1: Gender by primary substance of use (%)	13
Figure 2: Gender by region (%)	14
Figure 3: Treatment admission trends (% of patients ≤18 years)*: July-December 2023	15
Figure 4: Proportion of persons in treatment with cannabis as their primary substance of use (%)	17
Figure 5: Proportion of persons in treatment with Heroin/Opiates as their primary substance of use (%)	24
Figure 6: Treatment demand trends: Methamphetamine as primary or secondary substance of use, WC (%)	26

BACKGROUND AND SUMMARY



The South African Community Epidemiology Network on Drug Use (SACENDU) report back meetings for Phase 55 were virtual and PowerPoint presentations were made available to all stakeholders of SACENDU. As mentioned in the previous brief, moving forward, we will use a hybrid approach, using both virtual and face-to-face reporting meetings.

Established in 1996, SACENDU is a network of researchers, practitioners and policy makers from various sentinel areas in South Africa. Up until June 2006, these sites comprised of Cape Town, Durban, Gqeberha (formally known as Port Elizabeth), East London (EL), Gauteng Province and Mpumalanga Province (MP). As some sites were beginning to also include data from other towns/cities (e.g., Durban included data from Pietermaritzburg), it was decided to begin reporting data by province. From the second half of 2006, data were also collected from treatment centres in the Free State, Northern Cape and North-West. For the purposes of this report, these three provinces have been combined into a regional group termed the “Central Region” (CR). Data were also collected from three centres in the Limpopo province, as well as seven centres from the Mpumalanga province. Since the dataset continues to be small and we are in the process of growing provincial coverage from these two provinces, it was decided to combine the data for analysis purposes, and we now refer to these two provinces as the “Northern Region” (NR). Thus, this report now refers to the following six sites: Western Cape (WC), KwaZulu-Natal (KZN), Eastern Cape (EC), Gauteng (GT), the Northern Region (NR) and the Central Region (CR). The goal to include data from all nine of South Africa’s provinces in the SACENDU project has therefore been achieved, though there are still gaps in coverage at some sites. Membership to the SACENDU network is voluntary and recruitment of new centres and strengthening partnerships remains a key objective.

Since 2018, SACENDU has collected data from a range of organisations implementing community-based harm reduction services for people who use drugs (PWUD), including people who inject drugs (PWID). Services provided by these organisations and reported on in this Brief include data on HIV, STIs, viral hepatitis and TB prevention; testing and linkage to care; harm reduction behaviour change interventions; needle and syringe services; opioid substitution therapy (OST); monitoring of human rights violations and referral for other available substance use disorder treatment services. The data represented are from the following cities: Cape Town, Durban, Ekurhuleni, Ehlanzeni, Johannesburg, Sedibeng, Pietermaritzburg, Gqeberha, and Pretoria.

This report therefore comprises of data from **SPECIALIST SUBSTANCE USE DISORDER (SUD) TREATMENT CENTRES** as well as data from **COMMUNITY-BASED HARM REDUCTION AND HEALTH SERVICES CENTRES**.

Members of SACENDU meet every six months to provide community-level public health surveillance of alcohol and other drug (AOD) use trends and associated consequences through the presentation and discussion of quantitative and qualitative research data. Through this initiative, SACENDU provides descriptive information on the nature and patterns of AOD treatment demand and harm reduction service uptake data that allows for the monitoring of emerging trends, risk factors associated with AOD use, characteristics of vulnerable populations, and consequences of AOD use in South Africa.

The SACENDU initiative has several specific objectives:

- To identify changes in the nature and extent of AOD use and emerging problems.
- To identify changes in overall consequences related to alcohol and other drug use.
- To inform policy, planning and advocacy efforts at local and other levels.
- To support networks of local role players in the substance use area.
- To stimulate research in new or under-researched areas that is likely to provide useful data to inform policy and/or planning decisions.

To facilitate South Africa’s full participation in international fora focusing on the epidemiological surveillance of drug use.

Financial support for Phase 55 was provided by the Mental Health and Substance Use Directorate of the National Department of Health.

The second half of 2023 (i.e., 2023b) saw a decrease in the number of persons admitted for AOD treatment from **11 563 across 82 treatment centres in 2023a (January to June 2023) to 9 489 in 2023b (July-December 2023)**.

The current period saw an increase in **Alcohol**-related admissions for the NR (from 18% in 2023a to 29% in 2023b), in the CR (from 43% in 2023a to 50% in 2023b) and in KZN (from 36% in 2023a to 41% in 2023b). Between 12% (GT) and 50% (CR) of persons accessing



AOD treatment services reported alcohol as their primary substance of use. Admission rates for **Cannabis** remained relatively high for the current period. Between 20% (WC) and 36% (EC) of persons attending specialist treatment centres had **cannabis** as their primary substance of use.

Changes in cannabis use were seen for most regions, with the most notable increase reported for the EC (from 29% in 2023a to 36% in 2023b) and a decrease in CR (from 28% in 2023a to 21% in 2023b). Nationally, cannabis contributed 73% of all admissions among individuals 18 years and younger, decreasing 5-percentage points from the previous review period. The WC remained the province where **Cannabis/Mandrax** (Methaqualone) combination (also known as “white pipe”) was most often used as a secondary substance (34%), decreasing slightly from 36% in the 2023a period. GT (20%) remained the province where cannabis/mandrax was the second most common secondary substance of use.

Crack/Cocaine-related treatment admissions have remained consistently low over the past few reporting periods, with the national rate unchanged at 3%. Regional rates varied between 1% (CR) and 9% (KZN). KZN was reported as having the highest proportion for crack/cocaine as a secondary substance of use at 30%. Between 3% (WC and CR) and 23% (KZN) of all persons admitted to treatment used crack/cocaine as a primary or secondary substance of use. Few persons 18 years and younger (1% nationally) were admitted for crack/cocaine-related problems.

Nationally, **Heroin/Opiates** comprised 17% of all admissions for the July-December 2023 period, remaining consistent with the previous two reporting periods. The most notable decrease in heroin/opiate use was seen for the NR (26% in 2023a to 20% in 2023b) and WC (17% in 2023a to 13% in 2023b). In the CR, 73% of persons who had heroin/opiates as their primary substance of use reported injecting the drug. Rates for heroin/opiates as a primary or secondary substance of use ranged from <1% (EC) to 33% (NR) in the current reporting period.

Treatment admissions for **Over-the-counter/ Prescription-medicines (OTC/PRE)** as a primary drug of use was reported at ≤1% for most regions except

KZN (3%) and the EC (2%). Proportions for OTC/PRE-medicine use as primary or secondary substance ranged between 1% (NR) and 6% (KZN). During this reporting period, n=433 (6%) persons across all sites reported the non-medical use of codeine, decreasing from 9% in the preceding reporting period.

Treatment admission rates for **Methamphetamine** (MA aka ‘TIK’) as a primary substance of use were highest in the WC (34%) and GT (26%) compared to other regions. Most notably, MA-related admissions decreased from 23% (2023a) to 15% (2023b) in the EC. MA was reported as the third leading primary substance of use (6%) by persons 18 years and younger. The highest rates for MA as primary or secondary drug of use were reported for the WC (48%) and GT (38%).

Treatment admissions for **Ecstasy** as a primary drug of use remained low (<1%); this has remained largely unchanged over the last few reporting periods. Individuals may not be seeking treatment for Ecstasy use, which explains low admission rates, however, anecdotal reports suggest extensive recreational use.

Methcathinone (CAT/KHAT)¹, an amphetamine-type stimulant, has effects similar to that of MA. Across regions, CAT/KHAT was reported as a primary substance of use by 4% of individuals admitted to treatment. Rates for CAT/KHAT as primary or secondary drug of use varied from <1% (WC) to 10% (GT).

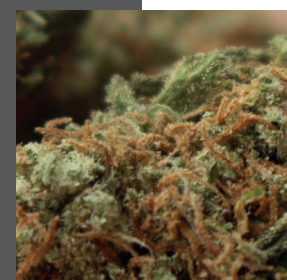
Inhalant/solvent use remained low at <1% across regions, ranging between <1% (WC) and 2% (EC). While rates were generally low, inhalant/solvent use is common among the homeless and children who live on the streets. Adolescents who use inhalants represent a subgroup of troubled youth with distinct and multiple vulnerabilities who are more likely to engage in delinquency and experience mental health problems such as depression and suicidality².

Nationally, indication of **Poly-substance use** (i.e., more than one substance of use indicated) increased from 50% in 2023a to 56% in 2023b; the WC, NR and GT (58% respectively) contributed the highest proportion of individuals who engaged in poly-substance use.

¹ CAT and KHAT are often used interchangeably during reporting which makes distinguishing between the two (CAT is synthetic and KHAT is plant-based) difficult during analysis. For this reason, these two categories have been combined.

² Lipari RN. Understanding adolescent inhalant use (Short Report), 2017. Substance Abuse and Mental Health and Mental Health Services Administration (SAMHSA). https://www.samhsa.gov/data/sites/default/files/report_3095/ShortReport-3095.html

METHODOLOGY



SACENDU utilises treatment admission data collected from treatment centres. These data are collected from approximately 86 specialist substance use treatment centres in South Africa, representing 70% of the available treatment sites in the country. The larger provinces such as the Gauteng and the Western Cape Province have more treatment centres compared to provinces such as the Eastern Cape. **Table 1** below provides a description of these sentinel sites as well as the number of provinces that have treatment centres that provide opioid substitution or medically assisted therapies (MAT).

TABLE 1: DESCRIPTION OF TREATMENT CENTRE LOCATION IN SOUTH AFRICA

Sentinel site	Description and Location	Urban/Rural	Number of treatment centres*	Number of centres offering MAT
Gauteng	Smallest province situated in the north-eastern part of South Africa	Highly populated, urbanised, and economic hub of the country	20	3
KwaZulu-Natal	Coastal province located in the south-eastern part of South Africa.	Second most populous, mountainous province running along the shoreline of the Indian ocean.	14	2
Western Cape	Situated on the south-western coast of South Africa	Highly urbanised and the third most populous province in the country	29	1
Eastern Cape	Second largest province by size, but poorest. Located on the south-eastern part of the country, and is bordered by the Western Cape, Northern Cape, Free State and KwaZulu-Natal provinces	Largely rural	9	0
Northern Region	Is comprised of two provinces, Mpumalanga and Limpopo provinces, both located in the north-eastern part of South Africa and share borders with Swaziland, Botswana, Zimbabwe and Mozambique. These provinces were combined into the Northern Region due to the few number of treatment centres found in these provinces	Mostly semi-urban	8	0



Sentinel site	Description and Location	Urban/Rural	Number of treatment centres*	Number of centres offering MAT
Central Region	Comprises three provinces, Free State (located in the centre/heart of the country), Northern Cape (largest province but sparsely populated), and the North-West (north-central part of the country). The Central Region is characterised by the livestock farming, agriculture, and mining industries. These provinces were grouped together due to a few number of treatment centres found in these locations.	Largely rural	6	0

*The number of treatment centres contributing data to the system fluctuate across reporting periods.

Treatment centres are invited to join the network and provide data related to their treatment admissions for each reporting period (current period July-December 2023). For admission to a specialist treatment centre, patients are required to meet diagnostic criteria (DSM-V/ICD 10) for a substance use disorder (APA, 2013). Participating treatment centres in the SACENDU network complete a standardized two-page form for each patient enrolled into their facility. The form consists of 22 forced-choice questions collecting demographic treatment and substance use information on each patient. The SACENDU data collection form is completed by designated facility personnel once the patient has been enrolled into the treatment programme. Forms

for each participating treatment centre are collated every six-months and sent to the South African Medical Research Council (SAMRC) for collation, analysis and reporting. Forms and electronic data received from specialist facilities are checked for possible miscodes and missing information and is subjected to a rigorous process of verification and correction before the data analysis process takes place. Data from each facility are aggregated to allow for provincial and regional trends on the number of substance abuse treatment episodes to be reported. As the SACENDU data is based on episodes of care, individuals may be represented more than once in the dataset (if they receive more than one treatment episode in a year).

SECTION 1: DATA FROM SPECIALIST SUD TREATMENT CENTRES

SITE SUMMARIES – PRIMARY SUBSTANCE OF USE BY PROVINCE

In the **Western Cape (WC)** the most common primary substances of use reported by 22 specialist treatment centres/programmes were largely consistent over the last three (3) reporting periods: MA (34%), cannabis and alcohol (19%), and heroin/opiates (13%), (Table 2). Collectively, these substances contributed 85% of all treatment admissions for the July-December 2023 period. The proportion of heroin-related admissions decreased from 17% to 13%. Overall, 1 489 persons were treated in the WC in the second half of 2023.

In **KwaZulu-Natal (KZN)** the main primary substance of use in the current reporting period remained alcohol, increasing from 35% to 41% in the July-December 2023 period, followed by cannabis (26%), and heroin/opiates (16%); heroin/opiates increased from 14% in the previous period. A total of 900 persons were treated across the 10 treatment centres that submitted data in the second half of 2023.

In the **Eastern Cape (EC)** the main primary substances of use reported by treatment centres from July-December 2023 were alcohol (increasing from 34% to 38%), followed by cannabis (increasing from 29% to 36%), and MA, (decreasing from 23% to 15%) (Table 2). A total of 315 persons were treated across 7 facilities.

In **Gauteng (GT)**, which includes the metropolitan areas of Johannesburg and Pretoria, 6 075 admissions across 26 treatment centres were recorded in the second half of 2023. The three main primary substances of use remained the same over the last two reporting periods: cannabis (30%), MA (26%) and heroin/opiates (19%) (Table 2). A decrease was seen for cannabis (34% to 30%) over the last two reporting periods (Table 2).

The **Northern Region (NR)** includes data from 7 centres (5 in Mpumalanga and 2 in Limpopo). A total of 410

admissions were recorded for the 2023b review period. The three leading primary substances of use reported by individuals admitted to treatment were cannabis (30%), alcohol (29%) and heroin/opiates (20%) (Table 2). Admissions for cannabis and heroin/opiates misuse decreased from 36% to 30% and 26% to 20%, respectively. In contrast, alcohol increased from 19% to 29% (Table 2).

In the **Central Region (CR)** (comprising the Free State, Northern Cape and the North-West), 300 admissions were recorded across five (5) treatment centres for the July-December 2023 period. Alcohol was the most common primary substance of use, accounting for 50% of all admissions for the current review period. This was followed by cannabis (21%) and MA (10%). Alcohol increased from 43% to 50%, while cannabis decreased from 28% to 21% over the last period (Table 2). Availability of specialist treatment for substance misuse remains inadequate in this region.

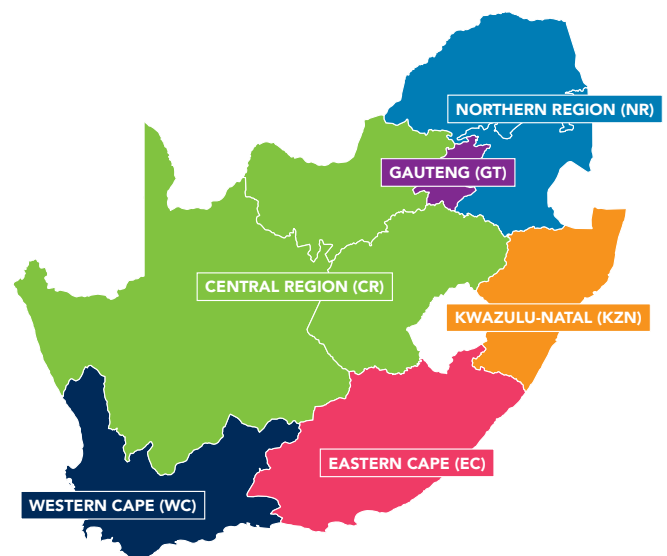


TABLE 2: PRIMARY SUBSTANCE OF USE: BY SITE AND 6-MONTH PERIOD (%)

Site	Period	Alcohol	Cannabis	Cannabis/ Mandrax	Crack/ Cocaine	Heroin	Ecstasy	OTC/PRE*	Meth**	Other	Total (N)
WC¹	2006a	30.2	7.7	3.3	6.0	13.5	0.1	1.4	37.2	0.7	2660
	2006b	26.4	10.5	2.9	4.8	10.2	0.1	1.6	42.3	0.8	2798
	2007a	29.5	10.4	2.7	3.9	10.6	0.2	1.1	40.7	0.9	2862
	2007b	29.7	12.6	3.0	4.2	12.8	0.1	1.2	36.1	0.5	3058
	2008a	30.0	11.2	2.5	5.0	13.2	0.3	1.4	35.8	0.0	2637
	2008b	27.6	13.6	2.7	5.6	2.8	0.1	1.2	35.1	1.2	2807
	2009a	26.8	13.9	1.0	2.8	10.9	0.1	1.0	40.6	0.0	3667
	2009b	29.4	16.7	2.7	2.3	12.0	0.0	0.8	35.5	0.0	2642
	2010a	29.8	15.6	3.9	1.9	13.0	0.2	0.1	33.6	0.0	3134
	2010b	27.5	18.2	3.2	1.9	11.6	0.0	1.2	35.1	1.2	2933
	2011a	27.5	18.3	2.9	1.8	13.0	0.0	0.4	35.3	0.8	2927
	2011b	23.7	14.5	2.4	2.2	17.0	0.0	0.5	38.8	0.9	2733
	2012a	23.6	20.4	2.9	1.7	15.6	0.1	0.7	33.7	0.3	3912
	2012b	22.2	22.4	3.8	1.4	15.1	0.2	0.4	33.3	1.2	3178
	2013a	20.2	20.5	3.1	1.5	16.8	0.2	1.4	27.8	8.2	3717
	2013b	21.2	25.0	2.5	1.6	13.0	0.1	1.0	33.4	1.9	3478
	2014a	19.9	21.7	4.3	1.2	18.5	0.1	0.6	32.7	1.1	3510
	2014b	22.0	23.4	4.5	1.5	12.7	0.1	0.6	34.9	0.3	3444
	2015a	21.3	22.1	4.4	1.3	14.2	0.0	0.4	35.4	0.8	3524
	2015b	19.9	24.9	5.3	1.2	10.7	0.0	0.5	36.7	0.8	2674
	2016a	22.0	28.2	4.5	1.4	10.8	0.0	0.8	31.7	0.6	2977
	2016b	20.6	28.7	6.1	1.3	12.8	0.0	0.9	28.9	0.7	2808
	2017a	26.4	28.7	5.4	1.2	10.3	0.0	0.4	26.8	0.7	2902
	2017b	23.6	22.0	6.7	2.2	13.7	0.1	0.7	30.2	0.8	2541
	2018a	24.0	25.9	6.4	2.2	12.5	0.1	1.0	26.8	0.7	3182
	2018b	19.8	30.5	6.4	2.3	11.4	0.0	1.1	27.6	0.3	2719
	2019a	17.8	26.0	6.4	1.9	16.4	0.0	0.9	29.4	1.2	3013
	2019b	19.2	25.4	6.4	2.7	14.2	0.1	1.0	29.9	1.0	2654
	2020a	10.9	14.9	8.2	1.6	18.2	0.1	1.5	43.8	3.5	1323
	2020b	16.8	16.7	7.2	3.3	14.1	0.1	1.1	40.1	0.6	1890
	2021a	18.2	23.6	7.5	2.5	11.3	0.1	1.5	34.7	0.3	2433
	2021b	20.0	26.7	5.6	2.1	9.1	0.0	1.4	34.8	0.2	2195
2022a	18.9	27.5	5.6	1.9	12.5	0.1	1.1	32.2	0.2	2265	
2022b	17.6	22.4	6.1	1.9	17.8	0.1	0.7	32.7	0.2	1928	
2023a	18.5	23.2	6.4	2.4	16.6	0.0	1.2	31.0	0.5	1483	
2023b	18.7	19.5	8.1	2.2	13.1	0.1	1.2	33.9	3.0	1489	

Site	Period	Alcohol	Cannabis	Cannabis/ Mandrax	Crack/ Cocaine	Heroin	Ecstasy	OTC/PRE*	Meth**	Other	Total (N)
KZN ²	2006a	60.4	22.5	1.0	6.8	2.1	1.0	5.2	0.2	1.0	485
	2006b	54.0	18.5	0.9	10.5	9.1	0.3	3.4	0.2	3.4	921
	2007a	49.8	20.5	1.2	9.0	15.9	0.5	2.2	0.0	0.9	1232
	2007b	38.8	17.4	0.4	8.6	31.6	1.0	1.5	0.0	0.7	943
	2008a	49.5	19.8	0.4	5.6	22.6	0.1	0.6	0.1	0.7	1531
	2008b	47.6	16.4	0.9	6.2	24.3	0.2	0.5	0.0	3.7	1537
	2009a	41.1	20.3	0.5	6.9	29.5	0.1	1.1	0.0	0.0	1575
	2009b	46.7	28.4	0.5	6.2	17.0	0.1	0.6	0.1	0.0	1138
	2010a	55.4	32.8	1.9	3.6	4.6	0.4	0.4	0.3	0.0	1009
	2010b	55.3	25.6	2.1	5.8	8.5	0.4	1.8	0.1	0.3	669
	2011a	62.9	17.1	1.3	6.7	10.0	0.0	1.1	0.0	0.9	720
	2011b	67.0	16.2	2.5	5.4	6.1	0.3	0.3	0.5	1.7	610
	2012a	64.9	18.8	1.2	6.3	4.4	0.7	1.2	0.0	2.5	569
	2012b	51.0	24.6	1.4	4.1	6.2	0.0	0.6	0.5	11.7	813
	2013a	51.1	31.5	0.6	6.1	6.1	0.6	1.1	0.3	2.6	934
	2013b	52.0	30.2	2.5	4.9	5.2	1.1	0.8	0.3	2.8	610
	2014a	42.4	36.0	3.9	2.1	10.1	0.4	1.2	0.8	3.1	484
	2014b	35.5	40.0	4.8	5.9	7.6	0.4	1.2	0.1	4.3	929
	2015a	38.2	38.9	6.2	3.5	4.7	0.3	1.2	0.4	6.5	1122
	2015b	37.2	33.8	5.5	5.2	6.6	0.4	0.9	1.1	9.3	1171
	2016a	29.4	39.3	3.0	4.7	14.6	0.8	1.5	0.6	6.1	1247
	2016b	36.8	34.3	1.3	4.3	10.3	0.5	1.1	0.7	10.7	1177
	2017a	33.6	32.1	3.3	6.2	9.9	0.4	1.0	0.9	12.4	1370
	2017b	36.9	28.8	2.5	5.9	9.9	0.3	2.2	0.9	12.6	1400
	2018a	28.9	28.5	2.6	6.7	27.7	0.2	2.1	0.9	20.5	1256
	2018b	29.2	29.0	2.4	7.7	26.2	0.5	2.1	0.9	19.0	993
	2019a	12.7	39.6	2.1	3.7	30.1	0.2	2.9	3.9	1.2	1291
	2019b	14.4	34.5	2.2	5.4	26.5	0.3	2.9	9.3	4.4	980
	2020a	14.3	34.9	2.1	6.0	25.5	0.5	3.0	8.5	5.1	565
	2020b	33.8	26.2	1.7	13.5	19.6	0.3	3.7	0.7	0.0	726
	2021a	32.8	23.1	1.7	13.3	22.9	0.3	2.5	2.0	1.3	723
	2021b	12.2	33.0	1.0	12.4	28.7	0.2	3.1	8.2	0.3	1146
2022a	31.0	28.3	1.3	10.4	20.7	0.1	3.2	2.8	1.5	1144	
2022b	29.4	27.6	3.9	8.3	19.2	0.0	7.9	1.7	1.0	1279	
2023a	35.5	27.7	2.1	11.1	14.4	0.3	2.5	2.9	2.5	1054	
2023b	40.5	25.7	0.8	9.3	15.9	0.0	3.4	2.7	1.2	900	

Site	Period	Alcohol	Cannabis	Cannabis/ Mandrax	Crack/ Cocaine	Heroin	Ecstasy	OTC/PRE*	Meth**	Other	Total (N)
EC³	2006a	40.7	14.4	7.9	21.4	8.1	1.2	2.6	3.5	0.2	1215
	2007a	51.8	18.3	8.6	14.2	1.1	0.3	3.8	1.4	0.5	759
	2007b	39.0	15.6	9.2	22.9	5.4	0.5	2.8	4.3	0.3	608
	2008a	44.3	15.8	3.6	20.1	6.0	0.4	6.5	5.0	0.5	551
	2008b	44.0	16.8	9.3	12.4	5.6	0.0	5.1	5.4	1.5	612
	2009a	52.0	17.7	8.5	7.8	2.7	0.1	7.0	3.7	0.0	1206
	2009b	49.7	15.9	5.6	7.4	3.5	0.0	9.3	7.4	0.0	648
	2010a	44.1	19.2	7.8	6.4	3.1	0.2	12.3	6.3	0.0	877
	2010b	44.1	18.0	5.7	7.1	5.2	0.0	9.9	9.2	0.8	707
	2011a	48.5	15.6	3.6	5.8	2.9	0.1	11.3	12.0	0.0	723
	2011b	40.4	16.1	5.0	4.0	2.6	0.3	11.5	18.4	1.7	721
	2012a	41.6	15.8	4.4	5.8	1.3	0.1	12.1	18.4	0.5	793
	2012b	37.7	24.4	6.3	7.3	2.8	0.0	2.2	15.8	3.5	316
	2013a	36.6	11.9	4.8	5.6	1.9	0.0	18.9	19.4	0.9	587
	2013b	39.5	12.9	6.6	4.7	2.3	0.0	16.5	16.9	0.6	527
	2014a	32.6	19.9	3.4	6.0	1.5	0.0	17.5	17.9	1.1	613
	2014b	35.4	21.6	7.4	5.3	1.2	0.0	11.0	16.3	1.8	663
	2015a	28.7	27.0	12.1	5.5	3.9	0.6	4.1	15.2	3.0	363
	2015b	24.0	31.2	10.4	3.4	2.3	0.0	1.3	25.3	1.9	471
	2016a	30.1	22.4	5.8	5.8	2.4	0.0	7.2	22.9	3.4	638
	2016b	38.5	23.8	8.0	2.6	2.0	0.0	5.6	15.5	3.9	537
	2017a	45.2	17.6	6.8	5.5	3.1	0.0	3.8	16.2	1.9	425
	2017b	34.0	23.5	9.7	4.3	2.1	0.0	3.3	20.0	3.1	515
	2018a	35.0	20.9	6.9	2.9	2.7	0.2	4.6	24.3	3.1	517
	2018b	33.8	21.8	6.0	3.1	2.4	0.2	4.2	25.8	3.6	450
	2019b	26.3	22.9	3.2	3.4	18.3	0.0	3.8	20.8	1.3	475
	2019b	37.5	22.3	4.2	2.3	1.5	0.0	4.5	26.2	1.5	336
	2020a	21.4	29.8	1.4	3.3	13.5	0.0	3.7	16.7	5.1	215
	2020b	21.4	26.3	5.1	4.7	1.8	0.0	2.0	37.3	1.3	448
	2021a	26.7	22.0	5.2	4.1	2.3	0.0	2.6	36.3	0.6	386
2021b	27.7	24.6	3.7	3.9	0.8	0.0	1.0	38.0	0.0	487	
2022a	23.2	25.6	8.1	6.2	2.2	0.0	1.3	31.1	2.2	371	
2022b	36.1	27.0	4.6	5.3	0.4	0.0	1.1	25.1	0.0	313	
2023a	34.0	28.6	2.9	3.3	1.2	0.0	5.2	23.2	0.4	241	
2023b	38.4	35.7	1.4	2.7	0.3	0.0	2.0	15.0	3.4	315	

Site	Period	Alcohol	Cannabis	Cannabis/ Mandrax	Crack/ Cocaine	Heroin	Ecstasy	OTC/PRE*	Meth**	Other	Total (N)
GT	2006a	47.5	20.5	3.0	11.1	7.8	0.4	3.2	0.3	3.2	3119
	2006b	47.2	21.5	1.4	10.7	9.7	0.2	2.7	0.2	5.9	3295
	2007a	45.9	20.8	1.4	13.0	10.6	0.3	3.7	0.4	4.4	3251
	2007b	47.0	19.3	1.6	14.2	9.6	0.2	3.6	0.4	4.1	3053
	2008a	47.0	22.4	1.7	13.3	8.1	0.2	4.0	0.7	2.5	2768
	2008b	48.4	22.4	2.0	8.8	6.4	0.3	3.5	0.3	7.9	3158
	2009a	45.0	28.2	2.2	6.7	6.7	0.5	3.2	1.0	0.0	2822
	2009b	47.0	27.5	1.7	4.9	11.9	0.2	2.6	0.5	0.0	2646
	2010a	44.4	27.0	2.5	6.1	12.1	0.3	3.6	1.2	0.0	2684
	2010b	41.3	28.4	1.6	6.3	12.4	0.2	3.0	1.0	5.7	2884
	2011a	37.8	24.9	1.3	7.3	16.0	0.1	4.0	1.7	6.8	2972
	2011b	35.9	27.6	1.7	6.2	12.7	0.6	3.5	1.4	10.4	2786
	2012a	34.3	28.5	0.7	6.0	14.9	0.2	2.4	2.4	10.8	3198
	2012b	27.8	25.9	0.7	4.3	9.6	0.0	1.8	2.5	23.5	3552
	2013a	26.9	39.7	0.9	3.3	11.8	0.2	1.3	2.6	13.4	4026
	2013b	24.6	36.7	1.6	3.8	12.9	0.2	1.3	2.7	16.2	3128
	2014a	18.8	41.6	2.1	2.6	11.5	0.3	1.1	3.9	9.8	3478
	2014b	19.9	35.5	1.6	4.0	13.5	0.3	1.2	3.3	20.7	3372
	2015a	20.0	37.7	2.7	3.8	12.3	0.2	0.9	4.0	6.1	3570
	2016a	17.9	37.7	3.9	4.9	11.8	0.2	1.7	5.1	16.8	3989
	2016b	21.8	35.7	1.9	2.4	13.0	0.2	1.2	6.3	17.5	2948
	2017a	17.3	45.7	1.7	2.2	13.1	0.1	1.5	5.5	12.8	3870
	2017b	17.3	41.2	2.3	2.6	14.0	0.1	1.3	6.3	14.8	3414
	2018a	15.5	32.5	2.2	2.3	30.5	0.2	1.3	5.9	18.6	2734
	2018b	13.9	36.4	1.9	2.7	27.3	0.1	1.2	8.0	18.0	2937
	2019a	18.1	32.4	3.0	3.2	25.9	0.1	2.3	8.9	5.9	3148
	2019b	11.6	29.7	2.8	3.0	36.3	0.2	0.7	11.2	4.4	4226
	2020a	11.4	33.7	2.3	2.7	32.5	0.0	1.5	9.9	7.0	3279
	2020b	8.2	26.5	3.7	2.5	33.8	0.3	0.9	14.9	8.9	5059
	2021a	9.4	27.3	2.9	3.5	29.4	0.3	2.6	17.3	8.9	6226
2021b	13.2	31.8	2.2	1.3	21.5	0.1	0.8	20.9	1.0	9701	
2022a	11.4	33.7	2.5	2.1	18.4	0.0	0.9	22.2	2.6	6665	
2022b	13.6	32.3	2.9	1.7	15.9	0.0	1.1	25.1	0.3	5504	
2023a	12.0	33.8	3.1	1.7	16.7	0.1	0.9	24.0	1.3	7482	
2023b	12.3	30.0	2.0	1.5	19.3	0.0	1.0	25.9	1.8	6075	

Site	Period	Alcohol	Cannabis	Cannabis/ Mandrax	Crack/ Cocaine	Heroin	Ecstasy	OTC/PRE*	Meth**	Other	Total (N)
NR ⁴	2006a	54.5	24.6	0.0	6.8	10.2	0.6	2.2	0.0	1.2	501
	2006b	47.3	34.1	0.4	4.6	9.6	0.2	2.4	0.0	1.3	539
	2007a	43.7	36.5	0.8	4.5	11.5	0.3	1.3	0.0	1.3	600
	2007b	43.3	38.4	0.0	7.8	6.8	0.2	1.4	0.4	0.7	602
	2008a	34.6	50.2	0.6	4.8	7.5	0.0	1.5	0.0	0.7	667
	2008b	34.3	44.9	0.3	5.2	8.6	0.3	2.3	0.0	4.1	729
	2009a	37.8	45.2	0.6	4.2	8.3	0.5	0.9	0.2	0.0	809
	2009b	37.6	43.9	0.3	4.1	11.2	0.3	1.5	0.0	1.1	652
	2010a	35.7	37.0	0.3	3.4	20.0	0.0	1.2	0.0	0.0	762
	2010b	31.4	40.7	0.4	4.0	20.2	0.1	1.3	0.0	1.8	669
	2011a	30.4	36.1	0.0	2.2	28.3	0.0	0.3	0.3	2.5	693
	2011b	26.5	36.4	0.4	4.1	22.2	0.1	1.8	2.1	6.4	892
	2012a	31.6	38.5	0.5	3.5	16.2	0.0	1.7	1.4	6.7	655
	2012b	24.1	32.8	0.6	3.9	21.8	0.1	1.0	0.6	15.2	818
	2013a	22.3	37.9	1.1	3.0	28.6	0.1	2.4	0.4	4.1	941
	2013b	22.8	45.6	0.4	1.7	22.8	0.0	0.8	1.0	4.8	959
	2014a	15.9	50.4	1.2	2.8	22.9	0.1	0.7	0.4	5.6	1004
	2014b	18.2	41.7	0.4	1.8	26.3	0.1	0.5	0.6	10.4	1134
	2015a	16.7	37.1	1.0	2.1	30.1	0.0	0.2	0.6	12.2	1076
	2015b	16.1	37.1	4.2	1.8	28.4	0.0	0.6	0.8	10.7	1247
	2016a	17.0	39.0	3.8	2.1	25.8	0.1	0.7	0.9	10.6	1026
	2016b	18.0	34.1	0.9	2.3	36.4	0.0	0.4	0.6	7.3	929
	2017a	14.6	45.5	0.9	5.3	28.3	0.1	0.3	0.6	4.2	1122
	2017b	15.7	41.9	0.3	3.9	27.3	0.0	0.6	1.6	8.7	1269
	2018a	14.5	39.2	1.8	2.7	30.8	0.0	1.0	9.3	16.5	1372
	2018b	17.3	38.3	0.5	2.1	33.7	0.1	0.9	2.1	16.2	1171
	2019a	16.7	36.3	3.4	4.1	23.5	0.2	1.4	9.1	5.4	1025
	2019b	15.3	40.2	0.3	3.3	32.8	0.1	0.8	3.7	1.3	1423
	2020a	15.1	31.1	2.5	4.7	28.3	0.1	1.8	9.1	7.3	768
	2020b	14.7	32.8	0.4	2.6	40.1	0.0	1.1	5.4	2.9	1024
	2021a	13.6	36.8	0.6	2.6	37.2	0.2	0.7	5.6	2.5	958
	2021b	19.3	30.8	0.1	11.7	28.8	0.2	0.0	3.9	0.1	1657
2022a	14.8	40.3	0.2	5.2	28.1	0.0	0.7	7.9	0.9	1165	
2022b	14.7	32.7	0.1	6.0	38.0	0.1	0.7	5.6	0.2	854	
2023a	18.4	36.3	1.7	7.1	25.5	0.0	0.8	5.7	3.0	772	
2023b	28.8	30.0	3.4	6.1	20.0	0.0	0.5	5.9	2.7	410	

Site	Period	Alcohol	Cannabis	Cannabis/ Mandrax	Crack/ Cocaine	Heroin	Ecstasy	OTC/PRE*	Meth**	Other	Total (N)
CR ⁵	2008b	67.0	11.9	0.3	6.3	0.3	0.5	3.9	0.0	9.7	636
	2009a	70.0	14.6	0.1	4.2	2.1	0.3	3.3	0.7	0.0	577
	2009b	68.6	20.0	1.0	2.9	1.0	0.0	2.9	0.0	0.0	491
	2010a	64.6	20.2	1.9	5.8	1.4	0.0	3.1	0.3	0.0	642
	2010b	66.2	19.3	1.3	4.0	2.6	0.0	2.2	0.9	3.5	545
	2011a	70.4	14.3	1.5	4.8	1.1	0.4	2.6	1.1	3.7	538
	2011b	58.7	20.9	2.0	5.8	2.2	0.0	2.9	2.2	5.3	549
	2012a	55.4	25.2	2.3	2.5	1.2	0.0	1.9	3.4	8.2	932
	2012b	54.5	19.8	1.6	5.7	2.2	0.0	1.4	2.0	12.7	495
	2013a	50.8	25.8	2.1	5.5	3.4	0.2	1.9	2.3	7.8	472
	2013b	46.9	32.6	2.7	3.9	2.4	0.0	1.0	2.9	4.1	414
	2014a	42.6	33.0	5.3	4.3	2.6	0.2	0.6	4.0	7.4	530
	2014b	39.2	30.7	4.7	2.1	5.5	0.2	1.1	4.1	12.4	655
	2015a	42.2	30.2	4.1	2.5	5.5	0.0	1.6	5.1	8.8	566
	2015b	42.1	24.4	5.5	4.2	5.5	0.4	0.9	7.7	9.3	546
	2016a	49.8	27.8	4.2	2.3	1.5	0.3	1.1	4.4	8.7	663
	2016b	47.2	26.8	4.1	4.6	2.1	0.0	0.3	0.3	10.8	388
	2017a	43.3	29.2	5.6	5.9	2.5	0.0	1.4	4.8	7.3	356
	2017b	45.4	30.6	4.9	3.1	2.9	0.0	1.4	6.3	5.4	350
	2018a	34.7	37.4	7.2	2.9	2.1	0.2	4.6	24.4	4.8	334
	2018b	38.4	24.1	6.0	4.2	7.4	0.0	0.9	11.1	7.9	216
	2019a	17.4	38.9	3.2	2.9	26.6	0.0	0.3	7.3	3.5	316
	2019b	38.6	35.9	2.7	2.7	4.8	0.0	2.1	11.6	1.6	189
	2020a	16.8	31.1	2.9	5.4	25.7	0.0	1.2	8.9	7.8	167
	2020b	24.7	28.7	6.1	5.7	12.6	0.0	1.6	15.8	4.9	247
	2021a	29.7	23.6	3.8	4.7	7.1	0.0	1.4	26.4	3.3	212
	2021b	27.9	37.8	2.8	4.6	4.4	0.0	2.4	15.4	0.8	495
	2022a	35.0	32.2	4.8	1.0	3.8	0.3	1.0	19.1	0.3	314
	2022b	40.1	23.6	5.1	1.0	5.1	0.0	1.7	18.8	0.3	292
	2023a	42.5	27.9	2.0	3.6	4.5	0.0	2.0	13.4	1.6	247
2023b		49.7	20.7	3.3	1.3	5.0	0.0	1.3	9.7	7.3	300

¹ Cape Town, Atlantis, Worcester; ² Durban, South Coast, Pietermaritzburg; ³ Port Elizabeth and East London; ⁴ Mpumalanga & Limpopo; ⁵ Free State, North-West, Northern Cape

*Over-the-counter, prescription medicine; **Methamphetamine

SITE SUMMARIES: SOCIO-DEMOGRAPHIC PROFILES

First time admissions: Nationally, the majority of admissions were first-time admissions (74%). The proportion of first-time admissions to treatment centres ranged between 58% (WC) and 90% (NR). Compared to the other regions, WC had the highest proportion of repeat admissions (42%) for the 2023b reporting period. The majority of readmissions in the WC were for MA (37%) and heroin/opiates (26%). Nationally, heroin/opiates (27%), MA (26%), and alcohol and cannabis (16% respectively) contributed the highest rates for readmissions.

Referrals: Nationally, the most common source of referral to specialist treatment centres was 'self/family/friends' (43%) and 'social services/welfare' (34%). Referral rates for 'self/family/friends' ranged between 35% (CR) and 52% (NR) while 'social services/welfare' ranged from 5% (KZN) to 44% (GT) (Table 3).

TABLE 3: REFERRAL SOURCES (JUL-DEC 2023) [COLUMN % ADD UP TO 100]

Referral Source	WC	KZN	EC	CR	GT	NR
Self/family/friends	45	47	51	35	41	52
Work/employer	8	10	10	25	2	8
Social services/welfare	21	5	12	8	44	19
Health professionals (Doctor/psychiatrist/nurse)	2	22	4	6	1	1
Hospital/clinic	5	3	1	<1	1	1
Court/correctional services	2	<1	1	0	1	1
Schools	10	8	20	18	9	15
Church/religious body	2	1	<1	0	<1	2
Other e.g. radio	6	2	0	7	1	0

Gender: The majority of persons admitted to treatment identified as male with proportions varying between 67% (EC) and 91% (NR). When gender was compared by primary substance of use across regions, variations

between genders emerged (Figure 1). In the EC and KZN, more females (67%) than males (33%) were admitted for CAT/KHAT use (Figure 2).

FIGURE 1: GENDER BY PRIMARY SUBSTANCE OF USE (%)

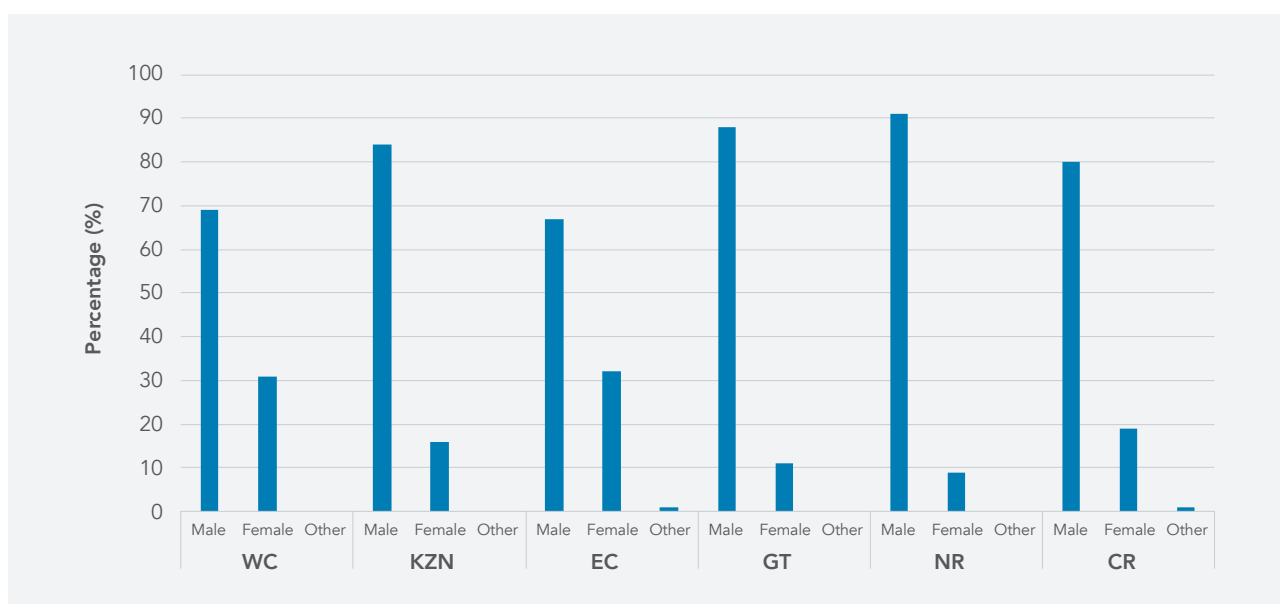
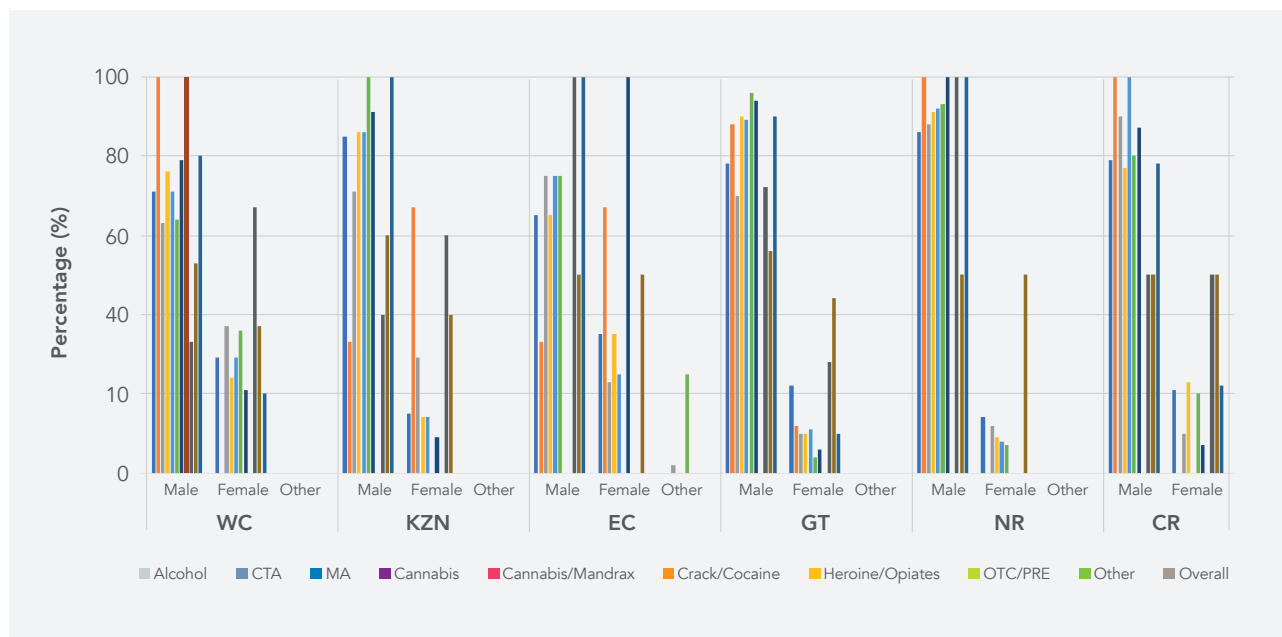


FIGURE 2: GENDER BY REGION (%)



Employment status and education: Between 8% (GT) and 44% (KZN) of persons admitted to treatment were in full-time employment. Unemployment rates ranged between 23% (CR) and 76% (GT). GT remained the region that accounted for the highest unemployment rates, including being unemployed for more than 6 months (70%). School-going service users ranged between 12% (WC) and 33% (CR). Across regions, the majority of individuals (84%) had a secondary school-level (grade 8-12) education. KZN (29%) and the EC (23%) had the highest number of persons with a tertiary-level education. Individuals with no schooling made up a very small proportion, comprising less than 1% across regions.

Mode of use: Smoking remained the most common mode of use for all substances nationally (67%) compared to other modes of use. Rates for injection drug use remained low across sites, ranging between 4% (WC, KZN, NR and CR) and 7% (GT). Overall, persons who had heroin/opiates as their primary substance of use reporting injecting as a route of administration increased from 22% (23a) to 33% (23b). Unlike the previous reporting period where the EC had the highest injection rates for heroin/opiates (33%), this period, heroin/opiates by injection route was not

reported. The highest injection rates for heroin/use were found in CR (73%), followed by the GT (35%).

Age of persons: The national mean age for all substances was 30 years (Table 3). However, age differences were noted for individual substance categories. Individuals were older when their primary substance of use was alcohol and ecstasy (mean age: 37 years, respectively), OTC (mean age: 34 years), followed by crack/cocaine, cannabis/mandrax, heroin/opiates (mean age: 33 years, respectively). Individuals who were admitted to treatment for tobacco products use were younger (mean age: 19 years) (Table 4).

A total number of 1 479 (16%) individuals ≤18 years were admitted to specialist treatment facilities for the current reporting period. EC was the region with the highest proportion of individuals aged ≤18 years admitted to treatment (n=107, 34%) (Figure 3). Substantial increases were seen for alcohol admissions in the CR (from 5% to 39%), KZN (from 4% to 22%), EC (9% to 17%), and the NR (from 16% to 30%). Decreases were seen in the WC (from 11% to 3%), from the 2023a to 2023b review period (Table 5).

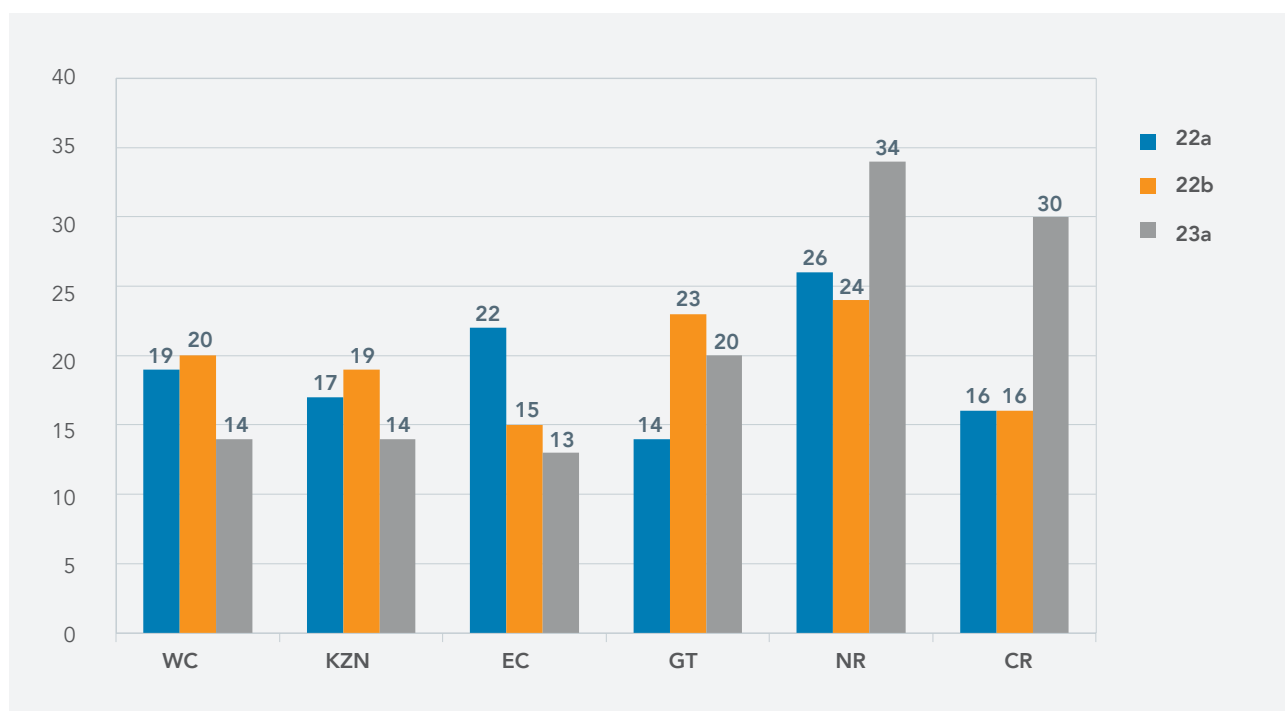
TABLE 4: MEAN AGE OF PERSONS IN TREATMENT CENTRES BY SELECTED PRIMARY SUBSTANCE OF USE (JUL-DEC 2023)

Substance of use	WC	KZN	EC	CR	G	NR	National
Alcohol	38	36	36	35	38	32	37
CAT/KHAT	33	29	27	35	29	26	29
Crack/Cocaine	32	34	26	39	34	30	33
Cannabis	22	24	19	18	24	24	23
Cannabis/Mandrax	36	35	29	27	31	27	33
Heroin/Opiates ¹	38	31	36	31	32	30	33
Inhalants	39	15	32	21	32	19	31
Methamphetamine	34	28	26	28	28	29	29
Ecstasy	37	-	-	-	-	-	37
OTC/PRE ²	33	36	36	40	32	44	34
Other combinations	35	37	15	15	30	32	28
Tobacco Products**	15	23	15	23	24	22	20
All substances	32	32	28	30	29	28	30

¹ Nyaope and whoonga have been incorporated into the heroin-related admission category to improve the accuracy of heroin surveillance; ² Over-the-counter or prescription medicines

**Tobacco products reported since 2022

FIGURE 3: TREATMENT ADMISSION TRENDS (% OF PATIENTS ≤18 YEARS)*: JUL-DEC 2023



*Data was previously reported for <20 years. From 2022 onwards, data is reported for youths aged 18 years and younger

TABLE 5: PRIMARY SUBSTANCE OF USE FOR PERSONS ≤18 YEARS (%): JUL-DEC 2023*

Site	Period	Alcohol	Cannabis	Cannabis/ Mandrax	Crack/ Cocaine	Heroin	Ecstasy	Meth ^a	OTC/ PRE ^b	Total (N)
WC ¹	22b	2.2	85.1	3.3	0.3	1.4	-	7.4	-	363
	23a	10.8	81.4	1.4	0.7	-	-	4.4	0.3	296
	23b	3.0	75.4	1.0	1.0	-	-	6.4	0.5	209
KZN ²	22b	6.5	57.8	0.7	1.1	4.0	-	0.4	27.6	276
	23a	3.9	74.7	3.9	0.7	0.7	-	-	2.6	154
	23b	21.5	63.7	-	0.8	0.8	-	2.5	4.1	121
EC ³	22b	3.7	65.4	2.5	2.5	-	-	24.7	-	82
	23a	8.5	71.2	-	1.7	-	-	15.3	-	59
	23b	17.0	67.0	0.9	1.9	-	-	8.5	0.9	107
GT	22b	3.4	74.3	2.0	0.4	1.0	-	13.2	0.7	955
	23a	4.6	79.4	1.9	0.4	0.4	0.1	7.2	1.0	1434
	23b	3.9	80.3	1.2	0.6	0.8	-	7.3	2.5	869
NR ⁴	22b	1.7	80.5	-	2.5	3.4	-	8.5	0.8	119
	23a	16.4	70.6	2.3	0.6	2.3	-	4.5	-	177
	23b	29.8	51.2	7.1	-	4.8	-	-	-	84
CR ⁵	22b	2.1	74.5	2.1	-	-	-	14.9	-	47
	23a	5.1	71.8	7.7	-	-	-	10.3	-	39
	23b	39.3	40.5	2.3	-	-	-	-	-	89

*Data was previously reported for <20 years. From 2022 onwards, data is reported for youths aged 18 years and younger

¹ Cape Town, Atlantis, Worcester; ² Durban, South Coast, Pietermaritzburg; ³ Port Elizabeth and East London; ⁴ Mpumalanga and Limpopo;

⁵ Free State, North-West, Northern Cape

^a Methamphetamine; ^b Over-the-counter, prescription medication not reported for previous periods

Sources of payment: Overall, the 'state' (61%) was the most substantial source of payment for treatment services. When considering source of payment by regions, the 'state' was also the most common funding source in the WC (77%) and GT (71%). 'Family/Friends' and 'state' equally contributed as sources of payment for treatment in the NR (39%). 'Medical aid' was the most common source of funding in the KZN (41%) and EC (33%).

HIV testing: Across the regions, over two-thirds (69%) of individuals admitted to treatment indicated that they had been tested for HIV, with 47% having been tested within the last 12 months. Between 35% (NR) and 68% (WC) of persons reported that they had been tested for HIV in the past 12 months. Increased rates for HIV testing in the last 12 months were noted for the WC from 59% in 2023a to 68% in the 2023b period. The lowest testing rates within the last 12 months were found in the NR (35%); a notable decrease was seen in the CR (from 50% to 37%). Low testing rates remain of concern across South African, highlighting the need for interventions that encourage voluntary counselling and testing (VCT).

SUMMARIES BY SUBSTANCE OF USE

ALCOHOL

Reported rates for alcohol admissions ranged between 12% (GT) and 50% (CR) (Table 2). A notable rise was seen for alcohol admissions in the NR, increasing from 18% in 2023a to 29% in 2023b. Increases were also seen in CR (from 43% to 50%), KZN (from 36% to 41%), and in the EC (34% to 38%) (Table 2). Nationally, the average age of persons admitted for alcohol misuse was 37 years. Average ages ranged between 32 years (NR) and 38 years (WC and GT) (Table 4). Individuals presenting to treatment centres

were more likely to be male (78%) compared to female (22%). The same trend was also seen across provinces.

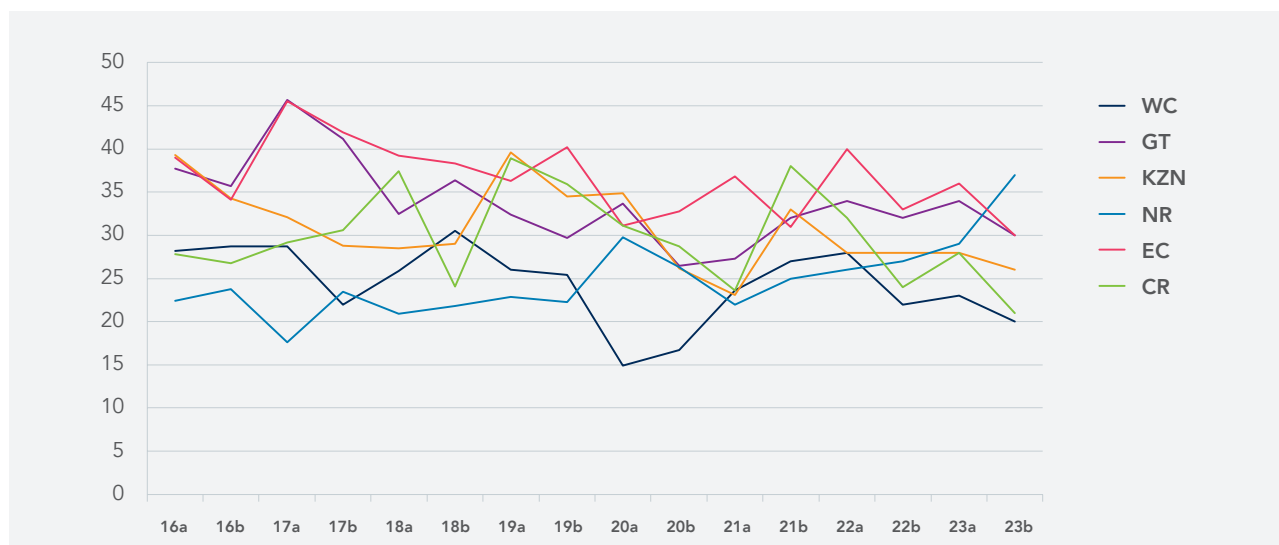
During this reporting period, service users 18 years and younger reported considerably more alcohol use in CR (5% in 2023a to 39% in 2023b), KZN (4% in 2023a to 22% in 2023b), NR (16% in 2023a to 30% in 2023b), and the EC (9% in 2023a to 17% in 2023b) (Table 5).

CANNABIS (DAGGA) AND MANDRAX

Nationally, cannabis was the leading primary substance of use among persons treated at specialist facilities (28%). Regionally, admissions for cannabis use ranged from 20% (WC) to 36% (EC) (Figure 4). Cannabis-related admissions increased considerably in the EC (from 29% to 36%) and decreased in the CR (from 28% to 21%) and the NR (36% to 30%). Across regions, cannabis contributed over three-quarters (73%) of admissions among individuals 18 years and younger, decreasing from 78% in 2023a. Notable decreases in cannabis use were seen for individuals 18 and younger in the CR (72% to 40%), NR (71% to 51%), KZN (73% to 64%), EC (from 71% to 67%) and WC (from 81% to 75%).

Admissions for cannabis/mandrax remained low, with rates ranging between 1% (KZN and EC) and 8% (WC) (Table 2). Cannabis/mandrax admissions were largely unchanged across regions, except for the WC where rates increased from 6% (2023a) to 8% (2023b), while a decrease was seen in the EC (3% in 2023a to 1% in 2023b). As a secondary substance of use, cannabis/mandrax use was most common in the WC (34%) followed by GT (20%) and the EC and CR (11% respectively). Across sites, persons admitted to specialist treatment centres with cannabis/mandrax as their primary substance of use were more likely to be older (national mean age: 33 years) than those who had cannabis as their primary substance of use (national mean age: 23 years) (Table 4).

FIGURE 4: PROPORTION OF PERSONS IN TREATMENT WITH CANNABIS AS THEIR PRIMARY SUBSTANCE OF USE (%)



Data from specialist treatment centres demonstrates that males continue to dominate treatment demand for cannabis and cannabis/mandrax use in comparison to their female counterparts. Nationally, a slight increase was seen for females reporting cannabis/mandrax as a primary substance of use (15% to 18%). When comparisons were made across regions, rates for cannabis use among

females ranged between 9% (NR) and 34% (EC). Admission rates for females using cannabis/mandrax as a primary substance ranged from 4% in GT to 36% in the WC. In KZN, only males were admitted for misuse of cannabis/mandrax. In the EC, cannabis/mandrax admissions were reported for males (75%) and individuals who identified as other (25%).

CRACK/ COCAINE

The proportion of persons reporting crack/cocaine as their primary substance of use remained fairly stable across regions though a marginal decrease was reported for the CR (3-percentage point increase) (Table 2). Rates ranged from 1% (CR) to 9% (KZN). Between 3% (WC and CR) and 23% (KZN) of all persons reported using crack/cocaine as a primary or secondary substance of use (Table 6).

The national average age of persons in treatment whose primary drug of use was crack/cocaine was 33 years (Table 4). An increase in mean age was found in the CR (34 years to 39 years) and a decrease in EC (33 years to 26 years).

The proportion of males reporting crack/cocaine as their primary substance of use were between 71% (WC) and 100% (CR); the WC had the highest rate for crack/cocaine use among females (29%) compared to the other regions. Between 26% (GT) and 75% (CR) of persons who used crack/cocaine had experienced prior treatment episodes.

Rates remained low among youths aged 18 years and younger who reported crack/cocaine as a primary substance of use, ranging between 1% (WC, KZN and GT) and 2% (EC). No service users aged 18 and younger reported crack/cocaine use in the NR and CR.

TABLE 6: PRIMARY OR SECONDARY SUBSTANCE OF USE* (%): JUL-DEC 2023

Site	Period	Alcohol	Cannabis	Cannabis/ Mandrax	Cocaine/ Crack	Heroin	Ecstasy	Meth ^a	OTC/ PRE ^b	Total (N)
WC ¹	05b	39.0	32.9	16.0	18.2	16.3	7.0	44.7	3.8	2131
	06a	41.2	28.3	14.0	15.6	16.2	5.5	46.3	3.8	2660
	06b	41.5	33.0	13.4	12.4	12.5	3.7	51.9	4.9	2798
	07a	43.6	31.7	12.6	10.4	12.0	2.8	49.3	3.2	2864
	07b	41.2	33.0	14.7	10.0	14.6	2.3	44.3	3.6	3058
	08a	42.1	30.6	15.3	12.2	15.2	2.8	45.8	4.5	2637
	08b	38.6	32.5	15.2	11.4	14.9	1.9	44.2	3.5	2807
	09a	36.5	32.5	15.2	6.6	12.2	1.6	50.1	2.3	3667
	09b	40.1	32.2	18.4	5.4	13.4	1.1	46.6	2.2	2642
	10a	40.7	33.9	17.9	5.2	14.1	0.9	45.6	2.3	3134
	10b	40.4	36.7	18.5	4.8	12.8	0.9	46.9	2.2	2933
	11a	36.6	35.3	15.2	4.6	14.7	1.1	46.6	1.2	2927
	11b	36.4	37.0	19.6	5.9	19.1	1.6	52.1	1.6	2733
	12a	34.3	39.7	16.1	4.5	18.4	1.3	48.4	1.6	3912
	12b	34.5	43.5	20.4	3.8	17.9	1.2	49.7	1.1	3178
	13a	36.6	44.7	22.5	4.0	18.6	1.2	39.9	2.3	3717
	13b	34.1	45.6	20.6	3.8	14.3	0.9	46.6	2.0	3478
	14a	26.5	32.8	17.4	2.4	19.3	0.3	47.2	1.4	3510
	14b	29.9	33.7	16.6	2.6	13.4	0.0	45.5	1.1	3444
	15a	28.4	33.4	18.9	2.6	14.8	0.0	49.1	2.2	3524
	15b	30.3	34.4	21.1	2.2	11.2	0.0	47.9	1.9	2674
	16a	31.6	37.1	20.1	3.1	11.3	0.0	42.3	1.4	2977
	16b	29.5	37.4	19.7	3.0	13.4	0.0	41.8	1.6	2808
17a	37.3	37.8	19.1	3.1	10.8	0.0	36.2	1.6	2902	
17b	35.9	29.9	23.7	3.7	14.4	0.4	43.5	2.7	2541	
18a	33.8	33.9	20.8	3.6	12.8	0.5	38.8	1.9	3182	
18b	33.1	39.0	20.7	4.4	11.8	0.1	38.7	2.4	2719	
19a	28.8	36.9	23.3	3.5	17.3	0.1	43.2	2.9	3013	
19b	30.9	35.5	23.0	5.0	14.9	0.3	43.1	3.3	2654	
20a	19.2	25.4	29.3	3.2	18.9	0.2	58.9	3.3	1323	
20b	26.5	41.5	27.1	5.9	14.7	0.0	55.3	3.3	1890	
21a	27.7	33.9	27.1	4.6	11.8	0.3	49.4	2.8	2433	
21b	33.9	47.7	38.8	5.4	10.9	0.3	57.0	4.2	2195	
22a	28.4	35.6	22.1	3.9	12.7	0.3	46.2	1.7	3439	
22b	24.4	30.6	28.3	3.5	18.4	0.1	48.8	1.9	3028	
23a	26.6	32.5	28.3	3.9	18.9	0.0	46.5	2	1483	
23b		27.8	29.0	29.0	3.3	13.5	0.3	48.7	2.3	1454

Site	Period	Alcohol	Cannabis	Cannabis/ Mandrax	Cocaine/ Crack	Heroin	Ecstasy	Meth ^a	OTC/ PRE ^b	Total (N)
KZN ²	05a	74.0	52.9	17.6	17.1	2.5	6.2	0.0	3.1	945
	05b	82.2	45.0	11.8	14.2	2.2	6.9	0.2	3.9	846
	06a	71.1	33.8	3.7	13.2	2.7	2.7	0.4	11.8	485
	06b	71.8	37.6	8.1	21.2	11.1	4.2	0.4	5.6	921
	07a	65.0	34.1	5.4	20.0	18.2	4.0	0.0	4.3	1232
	07b	53.2	34.6	4.3	20.4	34.7	5.6	0.0	2.9	943
	08a	61	37	5	14	24	1.2	0.3	1.4	1531
	08b	60.0	31.8	4.6	14.6	25.5	1.9	0.1	1.0	1537
	09a	54.5	31.2	4.3	15.4	30.7	2.8	0.1	1.9	1575
	09b	64.4	38.9	4.7	14.9	19.3	3.3	0.4	1.3	1138
	10a	76.2	43.9	5.4	11.2	21.8	3.8	0.5	1.5	1009
	10b	75.2	47.8	9.6	14.9	10.6	3.7	0.3	2.5	669
	11a	81.3	46.1	6.9	17.4	14.7	3.3	0.4	1.4	720
	11b	82.9	42.9	7.7	16.1	8.0	3.4	0.9	1.3	610
	12a	78.4	44.6	7.4	15.5	8.1	4.9	0.4	3.3	569
	12b	70.6	55.1	8.1	12.4	9.2	4.2	0.6	2.2	813
	13a	70.9	54.8	5.6	13.1	8.9	4.7	0.9	2.2	934
	13b	69.0	54.1	10.7	11.1	13.8	7.2	1.5	1.6	610
	14a	57.6	48.3	6.2	4.1	1.4	11.2	1.0	1.7	484
	14b	46.5	51.3	7.9	10.0	8.8	0.0	0.1	2.7	929
	15a	53.5	50.2	9.5	6.9	5.5	1.2	0.5	1.5	1122
	15b	49.1	42.8	9.1	9.5	7.7	2.3	1.5	3.8	1171
	16a	44.8	51.8	6.8	8.3	15.9	2.6	1.4	3.1	1247
	16b	52.5	45.4	5.3	10.4	12.1	2.2	1.1	2.7	1177
	17a	49.3	50.9	6.7	10.8	11.0	1.9	1.5	1.9	1370
	17b	49.4	43.9	6.0	12.1	11.2	1.3	1.3	2.6	1400
	18a	41.4	48.2	5.6	15.7	30.3	1.5	2.3	4.5	1256
	18b	49.2	47.2	5.8	15.2	28.1	1.4	1.6	6.3	993
	19a	21.1	49.7	5.4	10.0	33.9	0.7	6.0	4.4	1291
	19b	21.7	45.8	5.1	12.5	29.8	0.5	12.1	5.9	980
	20a	20.7	48.1	5.3	13.5	27.3	1.1	12.0	5.5	565
	20b	46.7	41.5	4.2	26.9	22.3	1.1	1.7	8.7	726
	21a	42.5	39.8	5.4	26.3	19.9	1.0	3.6	7.3	723
21b	33.9	63.6	3.9	26.3	39.1	0.7	20.9	7.2	1146	
22a	39.5	41.8	4.6	21.6	23.2	0.2	4.2	7.6	1666	
22b	37.8	39.8	8.1	16.8	23.2	0.0	3.3	16.8	1927	
23a	44.6	40.1	5.6	23.3	16.9	0.4	4.6	6.9	1054	
23b		49.8	37.3	2.6	23.5	18.2	0.1	4.4	6.1	896

Site	Period	Alcohol	Cannabis	Cannabis/ Mandrax	Cocaine/ Crack	Heroin	Ecstasy	Meth ^a	OTC/ PRE ^b	Total (N)
EC ³	05a	61.8	20.7	28.3	18.8	2.1	5.7	0.7	6.1	671
	05b	74.2	20.7	11.5	15.0	1.9	2.1	0.0	6.2	585
	06a	57.3	23.2	13.9	27.0	9.3	5.3	4.8	2.4	786
	06b	58.3	32.4	17.2	29.0	4.0	4.2	3.9	5.0	645
	07a	62.7	26.6	12.6	22.7	2.2	2.4	2.2	5.4	759
	07b	48.7	26.8	16.6	33.6	7.6	5.6	5.3	4.6	608
	08a	57.9	26.8	9.6	29.3	8.2	2.9	4.2	9.2	551
	08b	58.7	29.6	17.8	24.5	6.7	3.9	8.9	9.5	612
	09a	63.8	25.9	13.8	15.8	3.5	1.4	5.5	11.9	1206
	09b	61.3	26.5	10.8	14.8	6.5	2.6	9.6	22.1	648
	10a	54.0	28.2	14.6	11.9	3.9	1.0	9.5	15.2	877
	10b	54.2	28.7	13.0	14.7	6.1	1.1	14.1	12.0	707
	11a	56.8	25.6	10.8	10.9	4.0	1.4	16.3	13.6	723
	11b	46.5	24.8	12.3	8.6	3.6	0.8	22.7	13.5	721
	12a	49.8	26.9	11.6	11.7	1.9	1.8	23.3	14.4	793
	12b	56.3	41.1	19.3	29.4	6.1	1.2	22.8	5.7	316
	13a	43.3	22.7	12.1	11.6	2.4	2.2	23.3	21.6	587
	13b	46.3	23.5	7.8	7.8	2.7	1.9	20.9	19.4	527
	14a	36.5	26.1	8.6	8.8	1.8	0.3	21.0	20.6	613
	14a	41.9	27.1	12.2	7.5	1.5	0.0	21.9	15.4	663
	15a	42.7	34.9	18.5	9.9	4.4	0.0	25.9	5.5	363
	15b	32.5	43.1	18.3	5.5	2.8	0.0	34.4	1.7	471
	16a	42.5	36.1	14.4	7.6	3.3	0.0	29.5	9.6	638
	16b	46.6	35.4	16.9	4.7	2.2	0.0	22.3	8.6	537
	17a	56.7	28.5	14.4	9.6	3.7	0.0	24.5	4.0	425
	17b	45.0	33.4	16.7	6.6	2.5	0.0	33.6	5.2	515
	18a	45.8	32.7	13.9	5.4	2.3	0.3	35.2	6.8	517
	18b	48.7	32.7	13.1	5.1	2.9	0.4	35.3	5.3	450
	19a	30.5	45.5	9.7	4.6	20.0	0.0	23.4	7.2	475
	19b	47.6	40.8	11.0	4.5	2.1	0.0	32.7	6.3	336
	20a	25.6	47.4	5.6	10.2	19.1	0.0	24.7	6.0	215
	20b	32.8	45.1	21.1	9.4	2.2	0.0	48.2	2.9	448
	21a	63.5	40.4	17.4	8.8	2.3	0.0	49.7	2.1	386
21b	47.3	60.9	19.7	8.5	0.8	0.7	56.6	3.0	487	
22a	36.1	45.3	17.8	8.6	2.7	0.0	48.0	3.0	616	
22b	51.9	45.6	15.1	12.3	0.7	0.0	33.7	1.7	504	
23a	51.0	26.4	8.7	5.4	1.2	0.1	31.5	5.4	241	
23b		49.3	47.6	6.5	5.4	0.3	0.3	25.5	3.4	294

Site	Period	Alcohol	Cannabis	Cannabis/ Mandrax	Cocaine/ Crack	Heroin	Ecstasy	Meth ^a	OTC/ PRE ^b	Total (N)
GT	05a	57.9	34.6	13.2	19.0	10.5	4.6	0.5	6.7	3030
	05b	62.1	34.7	8.9	20.2	11.3	3.9	0.6	7.7	2848
	06a	56.9	33.5	6.8	21.4	10.6	3.3	0.6	11.2	3119
	06b	58.1	32.7	4.3	23.6	13.2	2.9	0.7	6.0	3295
	07a	55.3	33.2	3.6	25.4	14.3	2.8	0.9	7.7	3251
	07b	54.7	30.9	3.7	26.4	13.8	3.3	1.0	6.6	3053
	08a	60.8	34.4	4.5	24.8	15.4	2.1	1.2	2.9	2768
	08b	64.8	35.0	4.2	19.4	12.2	2.7	0.9	7.9	3158
	09a	57.5	40.1	4.7	16.1	13.7	3.3	1.6	7.7	2822
	09b	58.0	38.4	3.6	12.3	21.2	1.2	1.1	5.4	2646
	10a	54.7	41.5	4.9	14.9	21.2	1.2	2.1	7.1	2684
	10b	53.6	43.2	3.9	17.6	23.9	2.2	2.6	5.5	2884
	11a	48.0	44.7	3.9	18.5	25.0	1.8	3.4	7.4	2972
	11b	47.7	44.4	3.8	15.9	21.4	2.6	3.9	8.5	2786
	12a	44.9	44.3	2.6	15.9	22.2	2.3	5.4	4.5	3198
	12b	41.7	49.9	4.6	12.6	19.7	1.3	5.2	5.2	3552
	13a	38.5	57.1	3.8	10.9	20.9	1.2	8.0	2.7	4026
	13b	34.8	56.9	4.6	13.5	18.6	1.5	6.6	3.1	3128
	14a	25.8	53.8	4.2	5.2	13.9	0.6	6.1	1.5	3479
	14b	28.1	47.2	2.5	7.8	15.6	0.6	5.9	1.8	3372
	15a	27.3	51.4	2.6	6.5	18.6	0.5	7.7	2.5	4285
	15b	26.1	48.9	3.6	6.6	17.6	0.7	6.3	2.1	3570
	16a	22.5	49.9	5.3	6.5	13.7	0.4	7.9	3.6	3989
	16b	27.6	51.3	3.5	4.6	15.8	0.3	9.1	2.2	2948
	17a	21.4	56.6	3.9	4.1	19.9	0.4	8.1	2.6	3870
	17b	22.1	54.5	4.1	4.7	18.1	0.3	9.5	3.0	3414
	18a	19.9	45.1	4.5	5.3	36.9	0.3	8.9	3.6	2734
	18b	18.9	50.0	4.9	6.9	30.3	0.2	12.2	1.7	2937
	19a	24.4	45.3	6.9	7.7	28.8	0.2	13.3	4.8	3148
	19b	17.6	46.9	7.4	8.0	39.9	0.4	15.6	2.1	4226
20a	17.1	49.8	6.2	7.5	38.2	0.1	15.9	2.8	3279	
20b	11.9	43.5	9.5	7.3	40.1	0.4	22.7	2.5	5059	
21a	12.9	43.2	7.2	7.4	34.3	0.4	25.3	2.0	6226	
21b	22.6	62.9	12.5	9.0	29.0	0.6	39.9	3.0	9701	
22a	16.2	49.7	7.6	5.8	22.7	0.1	33.9	1.8	10247	
22b	17.9	44.8	10.1	4.0	19.5	0.1	36.5	2.0	8199	
23a	16.3	45.1	10.5	4.5	20.7	1	33.9	1.8	7482	
23b		16.6	43.4	13.5	5.7	23.9	0.1	38.9	1.9	6040

Site	Period	Alcohol	Cannabis	Cannabis/ Mandrax	Cocaine/ Crack	Heroin	Ecstasy	Meth ^a	OTC/ PRE ^b	Total (N)
NR ⁴	05a	62.9	34.1	1.1	12.6	18.5	3.6	0.6	5.1	525
	05b	65.7	41.5	2.1	13.9	15.1	2.7	0.9	4.1	562
	06a	66.7	40.3	2.4	16.2	21.0	3.2	0.2	4.8	501
	06b	61.0	44.7	1.7	13.9	22.6	3.2	0.4	4.5	539
	07a	53.3	48.3	2.5	14.3	31.7	2.5	0.8	2.2	600
	07b	52.7	48.6	0.5	15.4	22.8	2.9	0.3	3.6	605
	08a	45.1	61.9	1.7	12.1	21.9	1.2	0.3	3.0	667
	08b	41.2	61.2	1.0	11.5	19.2	1.2	0.3	4.2	729
	09a	45.7	57.9	0.9	10.5	17.5	2.9	0.7	2.3	809
	09b	47.7	56.4	0.6	10.4	25.6	2.1	0.2	2.3	652
	10a	43.9	57.7	1.0	10.8	28.1	1.6	0.0	2.5	762
	10b	41.7	61.9	0.7	11.9	24.9	0.9	0.6	2.4	669
	11a	40.1	66.9	0.4	8.4	34.3	0.9	0.7	0.7	693
	11b	35.1	64.7	1.5	13.6	29.9	1.7	3.5	3.4	892
	12a	44.1	59.8	2.6	13.6	25.0	2.1	3.8	2.9	655
	12b	35.9	59.2	1.5	9.8	25.8	2.4	2.2	2.4	818
	13a	31.2	68.5	1.8	6.5	29.5	0.9	1.2	2.9	941
	13b	31.2	71.9	0.6	8.9	35.5	1.0	2.6	1.4	959
	14a	22.4	56.6	1.2	5.2	24.7	0.7	0.8	0.9	1004
	14b	22.7	45.9	0.4	3.3	27.4	0.0	0.7	1.1	1134
	15a	21.6	42.8	1.6	5.8	31.1	0.0	0.9	0.2	1076
	15b	20.0	40.2	4.4	4.4	28.7	0.0	1.2	1.4	1247
	16a	23.4	46.2	4.8	6.1	26.5	0.0	1.3	0.9	1026
	16b	23.5	39.1	1.4	4.3	36.9	0.0	1.6	1.5	929
	17a	33.4	51.2	1.3	6.6	31.2	0.0	0.9	1.2	1122
	17b	44.7	48.1	0.8	6.4	29.2	0.1	2.2	1.3	1269
	18a	39.3	49.9	3.1	6.1	25.1	0.1	3.8	2.1	1372
	18b	36.9	47.1	0.8	6.8	38.2	0.4	4.7	1.5	1171
	19a	23.5	48.1	6.2	8.2	24.9	0.5	13.8	2.9	1025
	19b	29.2	48.9	0.8	7.4	35.8	0.2	6.3	1.8	1423
20a	23.9	44.5	5.7	10.8	32.3	0.2	13.9	4.2	768	
20b	30.5	51.1	1.1	6.5	45.1	0.0	8.4	1.8	1024	
21a	29.3	52.0	1.0	6.7	45.6	0.5	8.9	1.1	958	
21b	39.0	56.9	3.7	22.8	46.8	2.0	14.6	0.9	1675	
22a	23.5	52.9	0.5	12.4	40.7	0.3	15.6	1.2	1824	
22b	20.1	45.1	1.9	15.5	49.3	0.2	9.4	0.9	1274	
23a	23.1	50	3.0	13.9	37.8	0.0	11.1	1.3	772	
23b		33.9	50	6.1	10.2	33.2	0.2	11.7	1.0	410

Site	Period	Alcohol	Cannabis	Cannabis/ Mandrax	Cocaine/ Crack	Heroin	Ecstasy	Meth ^a	OTC/ PRE ^b	Total (N)
CR ⁵	07b	75.8	29.1	4.3	11.4	2.1	2.9	0.8	5.6	657
	08a	70.4	29	3.0	8.2	1.7	0.0	1.4	5.7	637
	08b	77.8	23.0	3.8	10.8	1.7	1.7	0.0	9.3	636
	09a	77.8	25.5	4.2	11.9	3.8	1.7	1.9	8.1	577
	09b	77.4	31.4	7.3	8.4	5.9	1.4	1.8	8.4	491
	10a	73.1	29.9	4.2	10.4	2.6	1.4	1.1	6.2	642
	10b	75.6	33.4	5.5	11.9	4.2	1.1	2.4	6.8	545
	11a	82.2	24.9	3.9	10.9	2.8	1.5	1.3	8.2	538
	11b	72.9	33.9	5.1	12.8	3.6	1.5	3.8	7.7	549
	12a	67.1	34.9	9.1	6.2	1.8	0.3	6.0	3.9	932
	12b	67.9	34.9	6.5	12.1	3.2	1.2	5.3	4.0	495
	13a	63.3	40.7	5.7	11.7	5.3	0.8	4.7	6.7	472
	13b	59.7	46.4	6.3	8.5	5.3	0.7	4.1	3.9	414
	14a	56.0	44.5	7.4	7.4	3.4	0.1	7.2	1.5	530
	14b	52.1	40.9	7.8	4.4	5.9	0.0	7.6	1.7	655
	15a	53.4	40.6	8.5	4.9	6.5	0.0	9.0	2.1	566
	15b	52.9	38.5	10.1	6.9	5.8	0.0	11.2	4.6	546
	16a	61.7	36.0	6.5	3.9	2.1	0.0	6.0	3.9	663
	16b	58.5	36.6	7.9	7.7	2.2	0.0	8.5	1.8	388
	17a	52.5	37.9	7.9	8.4	3.1	0.0	8.4	2.2	356
	17b	56.6	38.9	10.6	4.6	3.8	0.0	9.7	2.3	350
	18a	44.3	45.8	17.1	3.9	2.1	0.0	14.9	2.1	334
	18b	49.1	36.6	15.3	7.4	9.3	0.0	18.9	2.8	216
	19a	25.0	51.6	8.5	7.9	33.9	0.0	7.3	0.9	316
	19b	44.4	43.9	11.6	4.2	12.2	0.0	19.0	5.3	189
	20a	26.9	47.0	5.9	9.6	28.7	0.0	14.4	4.2	167
	20b	31.6	41.3	16.2	11.3	14.6	0.0	29.9	2.8	247
	21a	41.5	39.6	13.2	7.6	8.5	0.0	37.7	4.3	212
	21b	40.8	63.8	11.2	10.6	7.7	0.6	31.9	6.3	495
	22a	39.2	44.3	12.7	2.2	5.1	0.3	28.7	1.9	441
22b	43.5	34.9	9.2	3.1	6.2	0.0	29.8	2.7	402	
23a	51.0	42.9	5.3	4.9	4.9	0.3	27.9	4.5	247	
23b		56.0	30.3	7.7	3.0	5.3	0.0	18.3	2.7	300

*Proportion of persons who reported these substances as primary or secondary substances of use

¹ Cape Town, Atlantis, Worcester; ² Durban, South Coast, Pietermaritzburg; ³ Port Elizabeth and East London; ⁴ Mpumalanga & Limpopo;

⁵ Free State, North West, Northern Cape

^a Methamphetamine; ^b Over-the-counter, prescription medicine

HEROIN/OPIATES

Nyaope and whoonga³ have been incorporated into the heroin-related admission category to improve accuracy of heroin surveillance. Nationally, heroin/opiates comprised 17% of all treatment admissions for the current period. Between <1% (EC) and 20% (NR) of persons in specialist treatment centres reported heroin/opiates as their primary drug of use. Decreases were noted for heroin/opiates admissions over the last two reporting periods for the NR (26% to 20%) and WC (17% to 13%) (**Figure 5**).

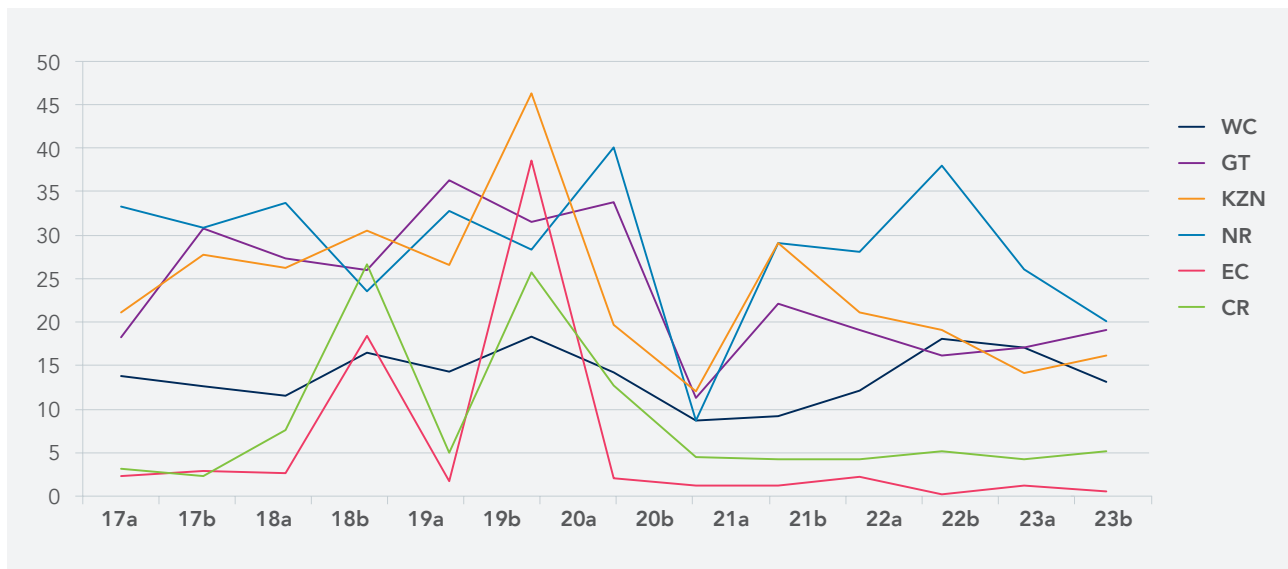
Nationally, the average age of persons who had heroin/opiates as their primary substance of use was 33 years, with mean ages ranging between 30 years (NR) and 38 years (WC) (**Table 4**). Between <1% (EC) and 33% (NR) of persons attending specialist treatment centres reported heroin/opiates as a primary or secondary substance of use. Although heroin/opiates was mostly smoked (71%), across sites between 19% (NR) and 73% (CR) of individuals who had heroin/opiates as their primary substance of use reported injecting the drug. The CR also had the highest

rates for heroin use by injection compared to other modes of use. There was no reported injection use for heroin/opiates in the EC during this period.

When comparing genders, more males reported heroin/opiates as a primary substance of use than females, ranging between 79% (WC) and 100% (NR). WC had the highest heroin/opiates rate as a primary substance of use among females (n = 41, 21%) as a primary substance at time of admission. Only males were admitted for heroin/opiate use in the NR; the EC had only one female case for heroin/opiate admission. The WC (77%) had the highest readmission rate among persons admitted for heroin/opiate use compared to other regions.

Service users aged 18 years and younger who reported heroin/opiate use ranged from 1% (KZN and GT) to 5% (NR). No heroin/opiate use was reported in the WC, EC and CR for service users 18 years and younger.

FIGURE 5: PROPORTION OF PERSONS IN TREATMENT WITH HEROIN/OPIATES AS THEIR PRIMARY SUBSTANCE OF USE (%)



³ Nyaope and whoonga are street names for low-grade heroin, often mixed with other regulated and unregulated substances. In South Africa, it is usually sprinkled on cannabis and/or tobacco and the mixture is rolled into a cigarette or 'joint' and smoked (DoH: Province of KwaZulu-Natal. Whoonga, wceregistrations@soafrica.com)

OVER-THE-COUNTER AND PRESCRIPTION MEDICINES

Admission rates for OTC/PRE-medicines as primary substance of use remained low, ranging between <1% (NR) and 3% (KZN) (**Table 2**); the national rate remains low at only 1%. Nationally, more admissions were made for males (56%) versus females (44%). Males and females were equally admitted for OTC/PRE-medicine use in the CR, EC and the NR (50% respectively). The WC was the region with the second highest rates for OTC/Pre-medicine admission rates among females (47%).

The national average age for OTC/PRE-medicine treatment was 34 years, ranging from 32 years (GT) to 44 years (NR) (**Table 4**). OTC/PRE-medicine admissions ranged from <1 (WC) and 4% (KZN) among individuals

18 years and younger. OTC/PRE-medicine misuse was not indicated for the CR and NR for individuals 18 years and younger (**Table 5**).

OTC/PRE-medicines as primary or secondary substances of use ranged between 1% (NR) and 6% (KZN) (**Table 6**). In the EC, the admission rate for OTC/PRE-medicine as a primary substance of use decreased from 5% (2023a) to 2% (2023b). Medicines used included benzodiazepines, analgesics, codeine products and sleeping pills. Nationally, a total of 433 (6%) of individuals were admitted for one product of codeine medication, and 34 (8%) individuals who reported a first product, also reported a second codeine product of misuse.

AMPHETAMINE-TYPE STIMULANTS (ECSTASY, METHAMPHETAMINE [TIK], METHCATHINONE [CAT/KHAT] AND LSD)

Ecstasy use was only indicated as a primary substance in the Western Cape region at <1% (**Table 2**). Rates for ecstasy as primary or secondary substance of use were also very low (<1%) across sites. (**Table 6**). Ecstasy was indicated as a secondary substance of use in EC (1%), and GT, WC, NR, and KZN (<1%) only.

The proportion of individuals reporting MA ('TIK') as their primary substance of use was highest in the WC (34%), followed by GT (26%) and the EC (15%). Admissions for treatment of MA use was lowest in KZN at 3% (**Table 2**).

The national average age of individuals reporting MA as their primary drug of use was 29 years. Average age ranged between 26 (EC) and 34 years (WC) (**Table 4**). Nationally, males (83%) represented the group with the highest rates for MA admissions compared to females (17%); this trend has been sustained for the last few reporting periods. Males were also in the majority for MA admissions regionally,

ranging from 63% in the WC to 90% in the GT and CR respectively. The WC had the highest proportion (37%) of females admitted for MA use compared to other regions.

National rates for MA route of administration showed that the majority of individuals smoked the substance (92%). When rates were compared across regions, a similar profile emerged with MA mostly being smoked, varying between 83% (KZN) to 97% (WC and CR, respectively). Most individuals admitted for MA use reported daily use (62%), remaining stable over the last few reporting periods. The highest proportions for MA as a primary or secondary substance of use was found for the WC (48%) (**Figure 6**). This was followed by GT increasing from 34% to 38%. Further changes were seen in overall primary or secondary substance of use in the CR where a decrease was seen from 28% to 18%, followed by a decrease in the EC from 32% (2023a) to 24% (2023b).

FIGURE 6: TREATMENT DEMAND TRENDS: METHAMPHETAMINE AS PRIMARY OR SECONDARY SUBSTANCE OF USE, WC (%)



Among persons aged 18 years and younger, 6% reported MA as their primary substance of use. MA was indicated as a primary or secondary substance of use among 9% of persons 18 years and younger. The EC region accounted for the highest number of persons 18 years and younger (8%) reporting MA as a primary substance of use, decreasing by 7-percentage points from 2023a. MA use among individuals ≤18 years was not reported in the NR and CR.

Nationally, 4% of individuals reported CAT/KHAT as their primary substance of use at the time of admission. Compared to other regions, GT reported the highest proportions for CAT/KHAT-related admissions (6%). Rates for CAT/KHAT as primary or secondary drug of use varied from <1% (WC) to 10% (GT). CAT/KHAT use remained relatively low across regions.

INHALANTS

Nationally, inhalant use comprised a small proportion of admissions at 1%. Admission rates for inhalant use remained low across regions, ranging between <1% (WC) to 2% (EC). This is likely to be an underestimate given

that inhalant misuse is common among those who find themselves destitute and therefore may not have easy access to care.

OTHER SUBSTANCES/POLY-SUBSTANCE USE

Poly-substance use remained high with over half (56%) of individuals admitted to treatment indicating the use of

more than one substance. By region, rates ranged between 41% (CR) and 58% (WC, NR and GT, respectively).

MENTAL HEALTH AND OTHER PHYSICAL COMORBIDITIES

Nationally, 14% (n=1 270) of individuals admitted to treatment presented with a dual diagnosis. Across regions, the largest proportion of persons in treatment presenting with a dual diagnosis reported mental health problems

(66%), followed by respiratory diseases (15%) and blood pressure illnesses (13%). Nationally, depression (33%), anxiety and panic disorders (22%) and sleep disorders (9%) were the three most common mental illnesses reported.

SECTION 2: DATA FROM COMMUNITY-BASED HARM REDUCTION SERVICES

A range of organisations are implementing community-based harm reduction services for people who use drugs (PWUD), including people who inject drugs (PWID). Services include: HIV, STI, viral hepatitis and TB prevention, testing and linkage to care; harm reduction behaviour change interventions; needle and syringe services; opioid substitution therapy (OST); monitoring of human rights violations and referral for other available substance use disorder treatment services. Interventions aimed at preventing and managing overdose are very limited, and community-based naloxone distribution is not currently provided.

During the reporting period TB HIV Care operated in the Eastern Cape (Nelson Mandela Bay District), Gauteng (Tshwane), KwaZulu-Natal (eThekweni), Mpumalanga (Ehlanzeni district) and the Western Cape (Cape Metro). Advance Access and Delivery and the Urban Futures Centre at the Durban University of Technology ran the Bellhaven harm reduction centre in eThekweni District. The Department of Family Medicine at the University of Pretoria's Community Orientated Substance Use Programme (COSUP) operated in the City of Tshwane (Gauteng Province). Sediba Hope provided harm reduction services at two centres in Tshwane District. In Gauteng Anova Health Institute's Jab Smart Project operated in the City of Johannesburg, Indibano Victim Empowerment Project in Sedibeng, Tintswalo Home Based Care in Ekurhuleni and Tsepo Ya Bana in West Rand. Inkunzi Isematholeni Foundation provided harm reduction services in uMgungundlovu District. Financing of harm reduction services were through the Global Fund (Cape Town, eThekweni, Ekurhuleni, Johannesburg, Nelson Mandela Bay, uMgungundlovu and West Rand Districts), PEFAR/CDC (Tshwane and Ehlanzeni) and City of Tshwane (Tshwane).

The data below reflects service delivery data for reporting period July - December 2023.

EASTERN CAPE

In *Nelson Mandela Bay* 730 unique PWID accessed services, with 119 220 needles and syringes distributed and 89% returned. 269 PWID tested for HIV, among whom 35 tested positive. A total of 33 people started ART, with 17 PWID confirmed to be virally suppressed during the period. 474 people were screened for tuberculosis (TB), with 52 being symptomatic, 17 diagnosed; 17 starting treatment and 0 with confirmed cure. No routine viral hepatitis testing was done. Opioid substitution therapy (OST) was not available. 72 human rights violations were reported, mostly involving the confiscation and destruction

of injecting equipment (64%). No deaths among people who use drugs were reported during this period.

GAUTENG

In *Ekurhuleni* 560 unique PWID accessed the services, with 194 895 needles and syringes distributed and 63% returned. 202 PWID tested for HIV, among whom 33 tested positive; 30 people were put on ART. A total of 5 people were confirmed to be virally suppressed. 202 PWID were screened for TB, with 0 being symptomatic, no TB was confirmed and no one was started on treatment. 36 people were screened for HCV antibodies with 33 being reactive; 26 people had confirmed infection (of 32 tested). 1 person was started on HCV treatment. Of the 36 tested for HBV surface antigen (HBsAg), 4 were reactive. 36 PWID were on OST at the beginning of the period and 64 were on OST at the end of the period. 118 human rights violations were reported, mostly due to the confiscation of injecting equipment (79%). Seven deaths among people who use drugs were reported during this period; no fatal overdoses were reported.

In *Johannesburg* 10 692 unique PWID accessed the services, with 919 215 needles and syringes distributed and 81% returned. 2 822 PWID tested for HIV, among whom 276 tested positive and 264 were started on ART. 12 PWID were confirmed to be HIV virally suppressed. 2 949 were screened for TB, with 29 being symptomatic, 1 diagnosed, 1 starting on TB treatment and 0 reporting cure. 34 people were screened for HCV antibodies with 29 being reactive. 17 people had confirmed infection (of 22 tested) and 2 people started HCV treatment. Of the 34 tested for HBV surface antigen (HBsAg), 1 was reactive. 234 PWUD/ID were on OST at the beginning of the period and 238 were on OST at the end of the period. 399 human rights violations were reported, the majority (41%) involving the confiscation of injecting equipment. 16 deaths were reported among people who use drugs, no fatal drug-related overdoses reported.

In *Sedibeng* 1 718 unique PWID accessed the service with 342 450 needles and syringes distributed and 87% returned. 291 PWID tested for HIV, among whom 37 tested positive and 36 started on ART. 25 PWID were confirmed to be HIV virally suppressed. 398 people who use drugs were screened for tuberculosis, with 89 being symptomatic, 6 infections confirmed and 6 receiving treatment. 53 people were screened for HCV antibodies with 43 being reactive. 40 people had confirmed infection (of 43 tested) and 8 people started HCV treatment. Of the 53 tested for HBV surface antigen (HBsAg), 1 was reactive. 53 PWUD/ID were on OST at the beginning of the period and 67 at

the end of the period. 197 human rights violations were reported, most (54%) linked to confiscation of injecting equipment and assault. Three deaths among people who use drugs were reported during this period, with no fatal overdoses reported.

In Tshwane 9 678 unique PWID accessed the services, with 518 888 needles and syringes distributed and 92% returned. 825 people who use drugs tested for HIV among whom 446 tested positive and 395 were started on ART. HIV viral suppression data was reported for 49 people. 2 803 people who use drugs were screened for tuberculosis with 19 being symptomatic, and 3 people diagnosed and 3 starting treatment and 1 person cured. 193 people were screened for HCV antibodies with 155 being reactive. 96 people had confirmed infection (of 109 tested) and 44 people started HCV treatment. Of the 181 tested for HBV surface antigen (HBsAg), 2 were reactive. A total of 701 people were on OST at the beginning of the period and 757 at the end of the period. 116 human rights violations were recorded, 29% due to confiscation of injecting equipment. 49 deaths were reported among people who use drugs during this period, including 3 fatal overdoses.

In West Rand 993 unique PWID accessed the services, with 229 815 needles and syringes distributed and 88% returned. 260 people who use drugs tested for HIV among whom 109 tested positive and 56 were started on ART. HIV viral suppression data was reported for 5 people. 301 people who use drugs were screened for tuberculosis with 17 being symptomatic, and 0 people diagnosed and 0 starting treatment. No routine hepatitis testing was provided. OST was not available. 29 human rights violations were recorded, 62% due to confiscation of injecting equipment. 0 deaths were reported among people who use drugs during this period.

KWAZULU-NATAL

In eThekweni 1 722 unique PWID accessed services, with 379 860 needles and syringes distributed and 108% returned. 539 tested for HIV, among whom 93 tested positive and 103 were on ART. HIV viral load suppression was confirmed in 33 PWID. 828 people who use drugs were screened for tuberculosis, 55 were symptomatic, 2 diagnosed and 1 started treatment. 39 people were screened for HCV antibodies with 25 being reactive, 20 people had confirmed HCV infection (of 24 tested) and 18 started HCV treatment. Of the 40 PWID tested for HBV surface antigen (HBsAg), 1 was reactive. 153 PWUD/ID were on OST maintenance therapy at the beginning of the period and 172 at the end of the period. 333 human rights violations were reported, 67% linked to the confiscation/ destruction of needles. Three deaths were reported among people who use drugs. No fatal overdoses reported.

In uMgungundlovu, 831 unique PWID accessed the services, with 104 490 needles and syringes distributed and 95% returned. 262 PWID tested for HIV, among whom 42 tested positive and 40 started on ART. 13 PWID were confirmed to be virally suppressed during this period. 373 people who use drugs were screened for TB, with 62 being symptomatic, 6 diagnosed, 5 starting treatment and 1 cured. No routine viral hepatitis testing was done. OST was not available. 196 human rights violations were reported, the majority (53%) linked to the confiscation of injecting equipment. Two deaths were reported among people who use drugs during this period, including one fatal overdose.

MPUMALANGA

In Ehlanzeni 686 unique PWID accessed the services, with 32 878 needles and syringes distributed and 97% returned. 363 persons tested for HIV, among whom 68 tested positive and 56 were started on ART. 29 PWID were confirmed to be virally suppressed during this period. 363 people were screened for tuberculosis, with 2 being symptomatic; 2 TB case was confirmed and 2 people started treatment and 0 people was cured. 475 people were screened for HCV among whom 341 were reactive and 19 had confirmed infection (of 19 tested). 476 people were tested for HBsAg, with 16 people identified to be reactive. 145 PWID were on OST at the beginning of the reporting period and 201 people at the end. 35 human rights violations were reported; 0% linked to confiscation and destruction of injecting equipment. Four deaths among people who use drugs were reported during this period, no fatal overdoses reported.

WESTERN CAPE

In the Cape Metro 1 821 unique PWID accessed services, with 837 210 needles and syringes distributed and 86% returned. 756 PWID tested for HIV, among whom 111 tested positive and 71 started ART. 4 PWID were confirmed to be HIV viral suppressed. 802 PWID were screened for TB, with 44 being symptomatic, 5 diagnosed, 5 starting treatment and 0 people cured. 35 people were screened for HCV antibodies with 22 being reactive. 15 people had confirmed infection (of 20 tested) and 11 started HCV treatment. 33 PWID were screened for HBsAg and 1 was reactive. 211 PWUD/ID were on OST at the beginning of the period and 267 at the end. 98 human rights violations were reported, the majority (61%) linked to confiscated/ destroyed needles and syringes. Eight deaths were reported among people who use drugs, no fatal overdoses reported this period.

TABLE 7: PWID ACCESSING NEEDLE AND SYRINGE SERVICE AND BEHAVIOUR CHANGE INTERVENTION PROGRAM (JULY - DECEMBER 2023)

Province	Health district	Male	Female	Trans	Median age (yrs)*
Eastern Cape	Nelson Mandela Bay (n=730)	70	30	-	-
Gauteng	Ekurhuleni (n= 560)	91	9	-	-
	Johannesburg (n= 10 692)	96	4	-	-
	Sedibeng (n=1 718)	96	4	-	-
	Tshwane (n=9 678)	96	4	-	-
	West Rand (n=933)	94	6	-	-
KwaZulu-Natal	eThekweni (n=1 722)	89	11	-	-
	uMgungundlovu (831)	87	13	-	-
Mpumalanga	Ehlanzeni (n= 686)	96	4	-	-
Western Cape	Cape Metro (n= 1 821)	81	19	-	-

*Data on specific age not captured

TABLE 8: COMPARISON OF PROPORTION OF PEOPLE WHO USE DRUGS ACCESSING NEEDLE AND SYRINGE SERVICES (JULY - DECEMBER 2023) WITH CENSUS DATA - BY DISTRICT

Province	District		Black African	Indian	Coloured	White
			%			
Eastern Cape	Nelson Mandela Bay	Population ¹	61	1	24	14
		Accessed service	33	1	28	39
Gauteng	Ekurhuleni	Population ¹	79	3	2	16
		Accessed service	87	1	6	7
	Johannesburg	Population ¹	76	5	6	12
		Accessed service	96	0	2	2
	Sedibeng	Population ¹	74	1	1	24
		Accessed service	97	0	0	2
	Tshwane ²¹	Population ¹	75	2	2	21
		Accessed service	75	0	1	2
West Rand	Population ¹	76	2	1	21	
	Accessed service	87	0	7	6	
KwaZulu-Natal	eThekweni	Population ¹	73	17	3	7
		Accessed service	89	4	4	4
	uMgungundlovu	Population ¹	90	3	1	6
		Accessed service	97	0	2	1
Mpumalanga²	Ehlanzeni	Population ¹	92	1	<1	6
		Accessed service	-	-	-	-
Western Cape	Cape Metro	Population ¹	37	2	42	18
		Accessed service	2	0	90	7

¹ Statistics South Africa, 2011 Census. Where proportions do not add to 100% it is due to rounding, or participants selecting "Other" demographic group.

² Data not captured

TABLE 9: PEOPLE WITH OPIOID DEPENDENCE ON OPIOID SUBSTITUTION THERAPY, LOST TO FOLLOW-UP AND EXITED (JULY – DECEMBER 2023) - BY DISTRICT

District	Non-injecting/ PWID	Number on OST at start of period	Number initiated on OST for first time	Number restarted	Number LTFU during period	Number exited during period	Number died during period	Number on OST at end of period
Nelson Mandela Bay	Non-injecting	-	-	-	-	-	-	-
	PWID	-	-	-	-	-	-	-
	Total	-	-	-	-	-	-	-
City of Ekurhuleni	Non-injecting	0	0	0	0	0	0	0
	PWID	36	38	0	8	2	0	64
	Total	36	38	0	8	2	0	64
City of Johannesburg	Non-injecting	16	0	0	0	0	0	16
	PWID	218	37	0	8	23	2	222
	Total	234	37	0	8	23	2	238
Sedibeng	Non-injecting	9	9	0	0	0	0	18
	PWID	44	31	2	6	3	1	67
	Total	53	40	2	19	8	1	67
City of Tshwane	Non-injecting	357	77	13	55	3	8	381
	PWID	344	64	9	34	1	6	376
	Total	701	141	22	89	4	14	757
West Rand	Non-injecting	-	-	-	-	-	-	-
	PWID	-	-	-	-	-	-	-
	Total	-	-	-	-	-	-	-
eThekweni*	Non-injecting	46	10	0	3	3	0	50
	PWID	107	28	0	4	9	0	122
	Total	153	38	0	7	12	0	172
uMgungundlovu	Non-injecting	-	-	-	-	-	-	-
	PWID	-	-	-	-	-	-	-
	Total	-	-	-	-	-	-	-
Ehlanzeni	Non-injecting							0
	PWID	145	63	0	2	3	2	201
	Total	145	63	0	2	3	2	201
Cape Metro	Non-injecting	25	4	28	1	0	0	56
	PWID	186	24	6	5	0	0	211
	Total	211	28	34	6	0	0	267

* No data on clients on low dose methadone in eThekweni available

IMPLICATIONS FOR POLICY AND FUTURE RESEARCH

SELECTED IMPLICATIONS FOR POLICY/PRACTICE⁴

During the Phase 55 regional report back meetings of SACENDU, a number of recommendations were made with regard to specific interventions needed to address substance use and substance use policy in general:

- Address high rate of injection use by heroin users in GT (including reducing risk of harm, by outreach and provision of OST, needle provision, testing for HepC/TB/HIV).
- Discussion is needed on whether treatment centres should be mandated to provide data on persons coming to treatment as part of accreditation.
- Increase advocacy with law enforcement agencies to protect human rights of drug users on the streets.
- Consideration should be given to require liquor producers and retailers to make data on production and sales available as a condition of national and provincial liquor licensing respectively.
- Funding for treatment programmes should be more related to evidence of impact and not just numbers treated.
- Consideration should be given to looking for ways to provide effective family planning services for persons who inject drugs and generally increasing outreach efforts to get community harm reduction services to injecting drug users.
- Financial support is needed by government for provision of continuous professional development of substance abuse treatment providers (including PG Dip in Addiction).
- Increased opportunities for shared learning for people in different substance abuse fields.
- Incentivise treatment centres to use evidenced based programmes – will require standards and continuous assessments for treatment centres.
- Identify pregnant women who use Nyaope and provide necessary screening and health support.
- TB symptom screening yielding low results in some districts, but higher levels in other districts.
- High hepatitis C burden among people who inject drugs in Ehlanzeni identified.
- High HIV yield among PWID accessing HIV testing services in Gauteng, Mpumalanga and KwaZulu-Natal.
- Care for 'caregivers' interventions that address the burnout experienced by caregivers of PWUD are needed.

SELECTED ISSUES TO MONITOR

Phase 55 of the SACENDU Project highlighted several conditions/factors that need to be carefully monitored over time:

- The increase in social service referrals in GT.
- The increase in methamphetamine (MA) as primary substance of use in GT.
- Rate of injection use among heroin/opiate users in treatment in GT.
- The decrease in school referrals and scholars coming to treatment in the WC.
- The increase in codeine treatment demand in the WC.
- The increase in alcohol use in 18 years and younger in KZN, EC, NR and CR.
- Anecdotal reports of fentanyl use in the WC.
- The number of needles and syringes distributed per PWID in Tshwane and Ehlanzeni was 40 - 45% less than in Johannesburg for the reporting period. These are sites that receive needles/syringes from Global Fund.
- Needles/syringes confiscated by law enforcement continues to be an issue of concern.
- Due to delays in contracting for a range of harm reduction service providers, the services provided to people who use drugs was limited to critical services, which resulted in limited access to harm reduction packs and less access to comprehensive support services to link people to other care and support services. Future grants should be planned to ensure consistent service delivery during transition periods.
- Increased need for expansion of viral hepatitis testing and treatment across all harm reduction service sites.

⁴ Outcomes emanating from regional meetings held in GP, KZN, PE and CT

SELECTED TOPICS FOR FURTHER RESEARCH/INVESTIGATION

Phase 55 of the SACENDU Project System highlighted the following topic for further research/investigation:

- What are the barriers to females accessing drug treatment and how best to address?
- Role of unemployment in substance use.
- Why the decrease in MA use by persons 18 and younger in GT?
- More research needed on the effects on Nyaope use on pregnancy, pregnancy outcomes, prevention efforts and long-term outcomes of newborns exposed to Nyaope use (in GT).
- Detailed assessment of causes of death among people who use drugs in community settings.
- Impact of different needle and syringe coverage/ saturation and its impact on drug-related harms.
- Additional community-based or regional studies are needed to explore the extent of inhalant/solvent use for youth, barriers to accessing specialist treatment services and other services available to support and help this vulnerable population.

LIMITATIONS

Phase 55 of the SACENDU Project highlighted a number of limitations:

- The SACENDU Project is a voluntary system that relies on data from specialist treatment centres. Data is not always submitted in a timely manner due to challenges faced by these centres such as staff constraints, staff turnover, etc.
- Due to the voluntary nature of participating in the SACENDU system, the number of treatment centres contributing data is not always consistent, impacting the comprehensiveness and coverage of the system.
- SACENDU receives admission episode data only. As the system does not receive patient-based data, information on prevalence of substance misuse cannot be generated.

SACENDU

South African Community Epidemiology Network on Drug Use

SACENDU is funded by the SAMRC, National Department of Social Development and the National Department of Health

FOR FURTHER INFORMATION CONTACT

Alcohol, Tobacco & Other Drug Research Unit
South African Medical Research Council
PO Box 19070
7505 Tygerberg (Cape Town)
South Africa

PH: +27-21-938-0398 | E-mail: nancy.hornsby@mrc.ac.za
<https://www.samrc.ac.za/intramural-research-units/atod-sacendu>