

## CONTACT DETAILS

Pretoria Office	Cape Town Office	Durban Office
<p>Tel: +27 (0) 12 339-8526 Fax: +27 (0) 12 339-8582 <b>Postal address:</b> Medical Research Council Private Bag X385 Pretoria 0001 South Africa</p> <p><b>Street address:</b> MRC Building 1 Soutpansberg Road Pretoria</p>	<p>Tel: +27 (0) 21 938-0445 Fax: +27 (0) 21 938-0310 <b>Postal address:</b> Medical Research Council Private Bag 19070 Tygerberg 7505 South Africa</p> <p><b>Street address:</b> MRC Building Francie van Zyl Drive Parow</p>	<p>Tel: +27 (0) 31 242-3600 Fax: +27 (0) 31 242-3806 <b>Postal address:</b> South African Medical Research Council P.O. Box 70380 Overport, 4901 South Africa</p> <p><b>Street address:</b> SAMRC Building 491 Peter Mokaba Ridge Road Overport</p>

### Pretoria



#### Professor Rachel Jewkes

**Executive Scientist for Research Strategy in the Office of the SAMRC President**  
**Director of What Works To Prevent Violence: A global programme to prevent violence against women and girls**  
**Secretary of the Sexual Violence Research Initiative**

Tel: +27 (0) 12 339-8525  
E-mail: rachel.jewkes@mrc.ac.za

Rachel is the Director of the MRC Gender & Health Research Unit, based in Pretoria, and a NRF A rated scientist and MRC gold medal winner in 2014. She is Secretary of the Sexual Violence Research Initiative ([www.svri.org](http://www.svri.org)) and Consortium Director of the DFID-flagship What Works To Prevent Violence? Global Programme ([www.whatworks.co.za](http://www.whatworks.co.za)). The Global Programme is working across 14 countries in Africa, Asia and the Middle East to generate knowledge on prevention of violence against women and girls. She is a medical doctor and Specialist in Public Health Medicine, with a Masters in Community Medicine and Doctorate of Medicine (MD) from the London School of Hygiene and Tropical Medicine. She has spent the last 20 years researching intersections of gender-based violence, gender inequity and health using methods drawn from epidemiology, anthropology and health systems research. She has authored over two hundred and fifty publications in peer-reviewed journals, book chapters and reports. She has worked closely with the South African Government over many years on sexual violence policy in the health sector. She is the Secretary of the Sexual Violence Research Initiative. She was the lead technical advisor on the UN Multi-Country Study on Men and Violence in Asia Pacific and a member of the steering committee of the WHO multi-country study on violence against women. She is a member of the WHO Expert Advisory Panel on Injury and Violence Prevention and Control, a member of the WHO's Strategic and Technical Advisory Committee for HIV-AIDS (STAC-HIV) and the STAG - WHO Department of Reproductive Health and Research, and a former member of the PEPFAR Scientific Advisory Board. Most importantly she has been working to ensure that these research findings are translated into interventions within society to improve the lives of women. She has a very active programme of PhD supervision and is also an Honorary Professor in the School of Public Health, University of the Witwatersrand.



#### Associate Professor Yandisa Sikweyiya

##### Specialist Scientist

Tel: +27 (0) 12 339 8619  
E-mail: yandisa.sikweyiya@mrc.ac.za

Sikweyiya is a Specialist Scientist at the Gender and Health Research Unit, South African Medical Research Council, and an Honorary Associate Professor at the School of Public Health, University of the Witwatersrand. His research focuses on the topic of men and masculinities as it intersects with violence and HIV; and on research ethics, and has authored over 44 publications in peer-reviewed journals, book chapters and technical reports on these topics.

Sikweyiya is a member of the National Health Research Ethics Council (NHREC), and a member of the DMTS Human Research Ethics Committee. He is an Associate Editor on the BMC Public Health board, and an editorial board member of the Journal of Bodies, Sexualities, and Masculinities.

His current research activities include being a principal-investigator in the following project: Exploring constructions, performances, and reconfigurations of masculinities during and after the Marikana mineworkers' strike of 2012. Moreover, he is a co-investigator in the following projects: 1) a RCT to assess the impact of the Rural Response System to Reduce Violence against Women in Ghana, 2) a RCT to evaluate the combined intervention of Stepping Stones and Creating Futures in urban informal settlements in Durban, South Africa, 3) Formative research and development of a sexual violence prevention intervention for South African Higher Education Institutions, 4) KAP and HIV Prevalence Study Among Farm Workers in Limpopo province, South Africa: An Evaluation Study, 5) Developing Research Capacity to Support Community-Based Interventions to Better Engage Men in the HIV Continuum of Care..



**Dr Nwabisa Jama Shai**  
**Specialist Researcher**  
Tel: +27 (0) 12 339 8528  
Email: nwabisa.shai@mrc.ac.za

Nwabisa is a Specialist Researcher in the Gender and Health Research Unit, Technical Advisor in the What Works To Prevent Violence to Prevent Violence Against Women and Girls global initiative and Honorary Senior Lecturer in the School of Public Health at the University of the Witwatersrand. Her research focuses on the prevention of gender based violence (GBV) and HIV through quantitative and qualitative and research, implementation of evidence based behavioural prevention curricula, and evaluation of GBV prevention interventions in low- and middle-income countries. Nwabisa has a special research interest on femininities particularly understanding how femininity influences women's vulnerability of GBV. Her current projects include the development, adaptation and evaluation of evidence based GBV prevention interventions in rural Nepal, rural Tajikistan, and in eThekweni informal settlements. Nwabisa has also conducted household surveys on GBV. She has co-authored peer-reviewed journal articles, book chapters, policy briefs and technical reports, and GBV prevention curricula from multiple sociocultural contexts including South Africa, Tajikistan and Nepal. Nwabisa works closely with South African government departments, UN agencies and non-governmental organisations to promote the scaling up of evidence based violence prevention interventions through the National Dialogue Forum, and other GBV policy activities. She also sits in the Editorial Board of the South African Crime Quarterly and the Project Empower board.

---



**Dr Mercilene Machisa**  
**Senior Scientist / Project Manager**  
Tel: +27 (0) 12 339 8596  
E-mail: Mercilene.Machisa@mrc.ac.za

Mercilene is a senior scientist and project manager in the SAMRC's Gender and Health Research Unit and an honorary lecturer at the University of Witwatersrand's School of Public Health. She has conducted research that includes epidemiology of gender-based violence in [South Africa](#) and other [Southern African countries](#) using national and population-based surveys, [investigating intersections and structural pathways of childhood abuse, mental ill health and gender-based violence experience or perpetration in adulthood](#), [criminal justice system responses to rape](#) and [developing an intervention for young women in higher education settings](#). Mercilene holds an MSc (Med) in Epidemiology and Biostatistics and a PhD in Public Health from the University of Witwatersrand.

---



**Dr Pinky Mahlangu**  
**Senior Scientist**  
Tel: +27 (0) 11 717 3441  
Email: pinky.mahlangu@mrc.ac.za

Pinky is a Senior Scientist and has a Masters in Development Planning. She is based at the Center for Health Policy of the School of Public Health, University of the Witwatersrand in Johannesburg. She is currently working on a PhD which is a policy analysis study that explores the multi-sectorial and multi-level response to HIV and AIDS in South Africa. Her research interests are in public health, health governance, and integrated development planning, urban HIV and policy analysis. Her current work involves integration of equity considerations such as gender, disability and HIV in public policy, urban health research on HIV and AIDS, intersectoral action on health and development issues and social determinants of health.

---



**Ms Shibe Mhlongo**  
**Biostatistician**  
Tel: +27 (0) 12 339 8588  
Email:shibe.mhlongo@mrc.ac.za

Shibe, is a data manager and statistician for the Gender and health RICE study, based in Pretoria. She has a degree in BSc Mathematics and Statistics from the University of Zululand and an Honours degree in Statistics from the University of Western Cape. She is at the beginning of her career and her interest area is in the analysis of longitudinal studies. She works closely with Carl Lombard (biostatistician) and Naeemah Abrahams on the impact of rape in women on HIV acquisition and retention and linkages to care.

---



### **Monalisa Hela**

#### **Senior Administrator**

Senior administrative assistant

Tel: +27 (0) 12 339-8526

E-mail: monalisa.hela@mrc.ac.za

Monalisa Hela is the administrative assistant to the Gender & Health Research Unit's Director in Pretoria and Cape Town Office and also the administrator responsible for the daily operations.

---



### **Liz Dartnall**

#### **SVRI Programme Officer/Snr Research Manager**

Tel: +27 (0) 12 338 8527

E-mail: liz.dartnall@mrc.ac.za or svri@mrc.ac.za

Liz is a health policy specialist with over 19 years of health research, public policy and project management experience. Liz currently manages the day to day activities of the Sexual Violence Research Initiative (SVRI), a global project hosted by the South African Medical Research Council. The SVRI aims to promote priority driven, good quality research in the area of sexual violence, particularly in low and middle income countries. Liz has a post-graduate degree in psychology from Curtin University in Australia and a Masters in Science (Medicine) from the University of the Witwatersrand, South Africa. Previous work experience includes working as a researcher at the Centre for Health Policy, University of the Witwatersrand; working in policy and research development for the Department of Health in Western Australia and the Department of Health in South Africa; and Senior Programme Manager for the African Medical and Research Foundation, South Africa. Liz is particularly interested in gaining a better understanding of how early experiences of violence influence future perpetration and victimisation and how this can be used to inform the development of primary prevention programmes. She is also interested in the area of vicarious trauma and doing research on sexual violence, and how to prevent it. For more information [www.svri.org](http://www.svri.org)

---



### **Norma Moremi**

#### **SVRI Chief Officer**

Tel: +27 (0) 12 339 8548

E-mail: norma.moremi@mrc.ac.za

Norma is a Social Worker by training and holds a Masters degree in Social Work from the University of Johannesburg. She worked as a social worker for the Department of Social Development and as an intern social worker at Non-Government Organisations such as Johannesburg Parent and Child Counselling Centre and Theodorah Ndaba Victim Support Centre. Her research interests include gender studies, and the prevention of Gender Based Violence in rural South Africa.

---



### **Dr Tirhani Manganyi**

#### **What Works? Global Programme Manager**

Tel: +27 (0) 12 339 8521

E-mail: tirhani.manganyi@mrc.ac.za

**Tirhani** is a South African national with over 15 years of experience in international development, research and grants acquisition and management (GAM). She has vast experience in the development as well as the management community-based programs, gender and development (GAD); monitoring and evaluation (M&E), program and project management, including proposal development. Dr Manganyi brings to her new role over 5 years of experience at senior management level and worked with multiple countries in Southern Africa. For 4 years, she has worked and supported 9 countries with proposal development as well as the management of programs funded by private, bilateral and multilateral donors. In her role as Regional Grants Quality Assurance Advisor in World Vision International, Dr Manganyi managed a portfolio of at least \$400mil across the 9 countries from various donors that had diverse compliance modalities and requirements. Dr. Manganyi possess proven capacity development, technical and management skills as well as strong networking and liaising capabilities to engage various donors; host governments, universities, and community-based stakeholders throughout the life of the project cycle to build capacity and ensure local ownership as well as sustainability of projects. She holds a PhD in Agricultural Education and Communication as well as a certificate in Gender and Development from the University of Florida, USA. She is also certified in Project Management, training and she recently completed the Hostile Environment Awareness Training (HEAT).

---



**Leane Ramsoomar-Hariparsaad (PhD)**  
**Research Uptake Manager**

Tel: +27 12 339 8557

Email: [leane.ramsoomar@mrc.ac.za](mailto:leane.ramsoomar@mrc.ac.za)

Dr Leane Ramsoomar holds a PhD in Public Health from the University of the Witwatersrand, a Master's degree in Health Promotion (with distinction) from the University of Kwa-Zulu Natal, an Honors degree in Psychology from the University of Durban-Westville and a BA degree (Cum Laude) from the same university. Leane has over 14 years' experience in research and academia, starting her career at the Human Sciences Research Council (HSRC). Prior to her appointment as Research Uptake Manager in the Global What Works to Prevent Violence Against Women and Girls? Programme, Leane was an honorary lecturer at the School of Public Health at the University of the Witwatersrand (Wits), Johannesburg, South Africa and an independent public health consultant. Between 2009- 2013 she was a full time lecturer in the Master of Public Health programme at Wits. Leane has extensive experience working with international University and donor organizations, including, the Universities of Kentucky and Ohio, The World Health Organization, and UNICEF. Her research interests include youth risk behavior, with particular focus on youth alcohol use, HIV prevention, health promotion and behavior change.

---



**Dr Esnat Chirwa**  
**Senior Statistician**

Tel: (+27) 12 339 8556

Email: [esnat.chirwa@mrc.ac.za](mailto:esnat.chirwa@mrc.ac.za)

Esnat is a Senior Statistician for the What works to prevent Violence project, a multi-country DFID-funded programme within the MRC Gender & Health Unit. She has a postgraduate diploma and Master's Degree in Biometry obtained from the University of Reading (UK), and PhD from the University of Witwatersrand (SA). Her career as a Statistician started at the University of Malawi, where she worked as a lecturer in Applied Statistics and was involved in teaching study designs, statistics theory and quantitative analysis methods to undergraduate and postgraduate students. She has done consultancy work for various medical research organisations. As a PhD student at University of Witwatersrand (SA), she was involved in statistical consultations for the Faculty of Health Sciences students. Statistical consultation activities included helping students with study designs, protocol writing, refining research questions, sample size calculations, data management and analysis. She is interested in application of multi-level models to longitudinal or hierarchical observational studies.

---



**Mseni Ndlovu**  
**Senior Finance Officer**

Tel: +27 (0) 12 339 8623

E-mail: [mseni.ndlovu@mrc.ac.za](mailto:mseni.ndlovu@mrc.ac.za)

Mseni works for the What Works to Prevent Violence Against Women and Girls? Programme as a Senior Finance Officer. He holds a Bachelor of Accounting Science Degree (BCompt). He has completed 3 year SAICA articles (learnership) at the office of the Auditor General. He joined the What Works to Prevent Violence Against Women and Girls? Programme with 5 years' experience in the Auditing environment. The bulk of his experience focused in the Public sector. He was involved in the audits of certain public entities (National and Provincial Departments), as well as local Government entities (district & local municipalities) while he was employed at the Auditor General of South Africa offices.

---



**Modiegi Mooko, Professional Accountant (SA)**  
**Senior Finance Officer**

Tel: (+27) 12 339 8541

E-mail: [modiegi.mooko@mrc.ac.za](mailto:modiegi.mooko@mrc.ac.za)

Modiegi is a Senior Finance officer for the What Works to prevent Violence against women and girls project, a multi-country DFID-funded programme within the MRC Gender & Health Unit. She is a holder of a Bcompt accounting with the University of Pretoria and a member of South African Institute of Professional Accountant (SAIPA). She has 3, 5 years' experience of auditing and 4, 5 experience in financial accounting in a public sector. She is currently studying an Advance Diploma in Accounting Science, specialisation: CTA - Certificate in the Theory of Accounting with University of South Africa.

---

## Cape Town



### **Professor Naeemah Abrahams**

#### **Acting Director**

Tel: +21 (0) 21 938 0823

E-mail: [naeema.abrahams@mrc.ac.za](mailto:naeema.abrahams@mrc.ac.za)

Naeemah is the Unit's Acting Director. She has a PhD and MPhil in Public Health and started her career as a nurse. She has worked in the area of gender based violence for the last 20+ years. She has two honorary appointments: as a Honorary Associated Professor with UCT Faculty of Health Sciences in the School of Health and Rehabilitation Sciences, as well as Extraordinary Professor with UWC Faculty of Community Health Sciences in the School of Public Health. She provides teaching, post graduate supervision and research support at both universities. Her special interests are health sector responses to gender-based violence, including the interface between GBV and HIV. Her research skills are in both epidemiological and qualitative methods. Her current research activities include longitudinal research on the impact on rape, sexual assault services - particular adherence to post exposure prophylaxis after rape to prevent HIV, mental health services for rape survivors, social responses to HIV and rape, developing and testing gender-based HIV and AIDS risk reduction skills interventions, femicide, intimate femicide, child homicide and infanticide. She was also involved in the Global Burden of Disease study in collaboration with WHO and the London School of Health and Tropical Medicine. She is currently also part of the Know Violence – a Global learning Initiative on violence in Childhood.

---



### **Dr Ingrid Van Der Heijden**

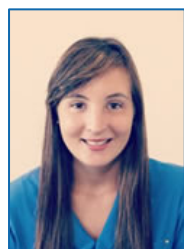
#### **Senior Scientist/Anthropologist**

Tel: +27 (0) 21 938 0824

Email: [iheidjen@mrc.ac.za](mailto:iheidjen@mrc.ac.za)

Ingrid is a Senior Scientist who is based in Cape Town and has a Masters in Social Anthropology and a PhD in Public Health. Her interests lie in exploring the intersections of gender, violence and disability in low-middle income countries. Her PhD focused on women with physical disabilities' experiences of gender-based violence in the Western Cape, South Africa. Her work on disability includes evaluating disabled people's participation in violence prevention interventions, as part of the What Works Global Programme. She is also involved in formative research on developing and testing gender-and disability-specific coping interventions and linkages to care and treatment for HIV positive people in South Africa.

---



### **Dr Bianca Dekel**

#### **Senior Scientist**

Tel: +27 (0) 21 938-0838

E-mail: [bianca.dekel@mrc.ac.za](mailto:bianca.dekel@mrc.ac.za)

Bianca is a senior scientist working in the Gender and Health Research Unit, based in Cape Town. Bianca holds a PhD in Psychology from the University of the Western Cape. Her research interests include GBV, trauma, parenting and homicide. She currently works on the third national female and child homicide study conducted by the Gender and Health Research Unit.

---



### **Prilene Stroud**

#### **Administrator**

Tel: +27 (0) 21 938 0329

Email: [prilene.stroud@mrc.ac.za](mailto:prilene.stroud@mrc.ac.za)

Prilene is an Administration Officer to the Gender and Health Research Unit for the Cape Town Branch. She is responsible for the Unit's Administration, Procurement and daily operations.

---

## Durban



**Andrew Gibbs**  
**Senior Specialist Scientist**  
Tel: (+27)31 2034899  
Email: andrew.gibbs@mrc.ac.za

Andrew has over 10 years' experience of working on gender and health from a variety of perspectives. He works on the MRC-Gender & Health Research Unit's "What Works Global Programme". He is also an Honorary Research Fellow at the Health Economics and HIV/AIDS Research Division (HEARD) at the University of KwaZulu-Natal. Andrew received his PhD in Psychology from the University of KwaZulu-Natal in 2015. He also holds an MSc in Health, Community and Development from the London School of Economics and Political Science. His research focus includes masculinities, intimate partner violence, processes of change and both qualitative and quantitative research methods. He has published widely on these topics.

Andrew is currently working on a number of projects within the What Works Global Programme. He is the Principal Investigator of the Stepping Stones and Creating Futures intervention trial, currently underway in Durban, South Africa. He is a co-Investigator on the Women for Women International (WfWI) trial in Afghanistan. He also provides technical research support to an evaluation of a media intervention in the Occupied Palestinian Territories, and general support around writing and analysis to other projects that fall under What Works.

---



**Samantha Willan**  
**Capacity Development Manager**  
What Works to prevent Violence Against Women and Girls  
Email: samantha.willan@mrc.ac.za  
Skype: Samantha.willan

Samantha has over 15 years' experience working on preventing violence against women and girls, gender equality, sexuality, and HIV, from a women's rights perspective. Her work has spanned providing technical support and capacity development, training, intervention development and implementation, global research and policy influencing. While being based in South Africa her focus has been across southern and eastern Africa and South Asia, with a global outlook in relation to research and policy developments.

She has recently joined the What Works to Prevent Violence against Women and Girls team as the Capacity Development Manager. Prior to that she was the Programme Lead for the Gender Equality and Health Programme at HEARD, UKZN a programme which she co-founded in 2009. Her work has focussed on research to improve the evidence base around what works to prevent violence against women and reduce women's HIV risk. She focuses on generating evidence to improve interventions and our understanding of VAW and improving the realisation of women and girls sexual and reproductive health and rights. Alongside generating evidence she supports capacity development of researchers and implementers globally. She was recently involved in a flagship programme around the development of an intervention that utilised a gender consciousness raising and livelihoods approach, this work has received funding for a random control trial. She has also undertaken pioneering policy work on ensuring that National Strategic Plans on HIV & AIDS in east and southern Africa include women, girls and gender equality.

Previously she worked as the Policy Adviser: HIV&AIDS and Gender at VSO (2004-2006), in London; Project Director at HEARD (2000-2004) and as Information Manager at the South African Truth and Reconciliation Commission (1996-1998). Her professional expertise is complemented by her activism for over 25 years around social injustices, women's rights, sexuality and HIV. She obtained her masters in Political Science in 1998 at the University of Natal.

---



**Alesha Sewnath**  
**Project Manager/Scientist**  
Tel: +27 (31) 242 3720  
E-mail: alesha.sewnath@mrc.ac.za

Alesha is a project manager at the Gender and Health Research Unit, based in Durban. She is working with the Rape Impact Cohort Evaluation (RICE) Study as the project manager and is responsible of the overall set up and management of the study. She has a background in clinical trials, having set up and managed various phase 1/11/111 trials with The International Maternal Paediatric Adolescent AIDS Clinical Trials (IMPACT) Network as well as managing other clinical studies within the paediatric HIV field. She has a MMedSci degree in Paediatrics and Child Health from the Nelson R. Mandela School of Medicine and is currently working towards her PHD at Stellenbosch University.

---



**Sister Tholsie Gounden**  
**Senior Research Technologist**  
Tel: +27 (31) 242 3720  
E-mail: tholsie.gounden@mrc.ac.za

Sr Tholsie is a Senior Research Technologist at the Gender and Health Research Unit, based in Durban. She is working with the Rape Impact Cohort Evaluation (RICE) Study as the senior nurse as well as assisting in management of the study. She has a background in clinical trials, having worked on phase 1/11/111 trials with The International Maternal Paediatric Adolescent AIDS Clinical Trials (IMPAACT) Network. She has a Diploma in General, Community, Psychiatric and midwifery nursing with over 20 years' experience within this field.

---



**Sinqobile Philile Mngadi**  
**Senior Research Technologist**  
Tel: +27 (0) 31 242 3720  
Email: sinqobile.mngadi@mrc.ac.za

Sinqobile Philile Mngadi is a Senior Research Technologist at the Gender and Health Research Unit based in Durban. She joined the unit in July 2014 working in the RICE Project with Prof. Naeema Abrahams. She has a Bachelor of Psychology degree obtained from The University of Zululand and is registered with the Health Professions Council of South Africa. Her duties on the project are to provide counselling and support to the participants of the study and the team. She also assists with the Bryant System, which is used for data collection, addressing queries on the system and other administrative work.

---



**Nikiwe Ntanzu**  
**Research Technologist**  
Tel: +27 (31) 242 3720  
Email: nikiwe.ntanzi@mrc.ac.za

Nikiwe is a Research Technologist for the Gender and Health Research Unit and she works on the RICE Study which is based in KZN, Chatsworth site. She has a nursing certificate obtained in 2002 at Chatsmead Chandeleight Nursing College. Her duties are doing clinical and health assessment reports, HIV counselling, sexual health assessments, drawing of bloods of participants and referring participants to local clinics or Thuthuzela Centres for any further management.

---



**Thobeka Majola**  
**Research Assistant**  
Tel: +27 (0) 31 242 3600  
Email: thobeka.majola@mrc.ac.za

Thobeka is a recruiter/Research assistant for the RICE study, based in Durban. She has a BA Degree majored in Psychology in Communication Science. She joined Gender Health Research Unit in 2014 when the Rice Project started, her duties include recruitment of rape exposed participants and recruitment of rape non exposed participants, conducting interviews with participants as well as retention of these participants.

---



**Mpumelelo Mabhida**  
**Retention/Counsellor**

Contact No. 031 242 3720  
Cell No. 071 076 9322

Mpumelelo joined SAMRC in June 2016 as a RETENTION/COUNSELLOR, based in Durban Chatsworth. She currently completing her Diploma in Public Management, duties includes Calling of scheduled participants, tracking missed visits and making sure of that participants are retained in the study as expected.

---